

PHOSPHO-STAT1 (SER727) RABBIT MAB

货号: N262937

产品全名: Phospho-STAT1 (Ser727) 兔单克隆抗体

基因符号 STAT1; Signal transducer and activator of transcription 1-
alpha/beta; Transcription factor ISGF-3 components p91/p84

UNIPROT ID: P42224

背景: The protein encoded by this gene is a member of the STAT protein family. In response to cytokines and growth factors, STAT family members are phosphorylated by the receptor associated kinases, and then form homo- or heterodimers that translocate to the cell nucleus where they act as transcription activators.

抗原: A synthetic phosphopeptide corresponding to residues surrounding Ser727 of human STAT1

经过测试的应用: WB,IHC-P

推荐稀释比: WB: 1/500-1/1000 IHC: 1/50-1/100

种属反应性: Rabbit

克隆性: Rabbit Monoclonal

克隆编号: R09-2G9

分子量: Calculated MW: 87 kDa; Observed MW: 87 kDa

亚型: IgG

纯化: Affinity Purified

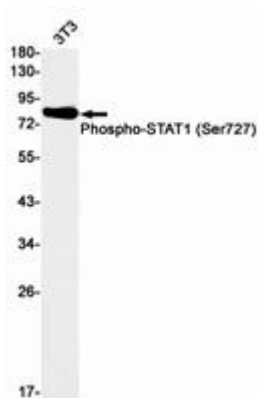
种属反应性: Human, Mouse and Rat

Modification: Phosphorylated

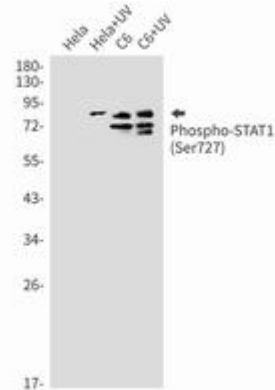
成分: PBS (without Mg²⁺ and Ca²⁺), pH 7.3 containing 50% glycerol, 0.5% BSA and 0.02% sodium azide

研究领域: Signal Transduction

储存和运输: Store at -20°C. Avoid repeated freezing and thawing



Western blot analysis of Phospho-STAT1 (Ser727) in 3T3 lysates using Phospho-STAT1 (Ser727) antibody.



Western blot analysis of Phospho-STAT1 (Ser727) in Hela, Hela+UV, C6, C6+UV lysates using Phospho-STAT1 (Ser727) antibody.