

## PHOSPHO-SMAD2 (SER255) RABBIT MAB

货号: N261732

产品全名: Phospho-Smad2 (Ser255) 兔单克隆抗体

基因符号 SMAD2; MADH2; MADR2; Mothers against decapentaplegic homolog 2; MAD homolog 2; Mothers against DPP homolog 2; JVI8-1; Mad-related protein 2; hMAD-2; SMAD family member 2; SMAD 2; Smad2; hSMAD2

**UNIPROT ID:** Q15796

背景: The protein encoded by this gene belongs to the SMAD, a family of proteins similar to the gene products of the Drosophila gene 'mothers against decapentaplegic' (Mad) and the C. elegans gene Sma. SMAD proteins are signal transducers and transcriptional modulators that mediate multiple signaling pathways.

抗原: A synthetic phosphopeptide corresponding to residues surrounding Ser255 of human Smad2

经过测试的应用: WB,IHC-P,IP

推荐稀释比: WB: 1/500-1/1000 IHC: 1/50-1/100 IP: 1/20

种属反应性: Rabbit

克隆性: Rabbit Monoclonal

克隆编号: R02-8F2

分子量: Calculated MW: 52 kDa; Observed MW: 60 kDa

亚型: IgG

纯化: Affinity Purified

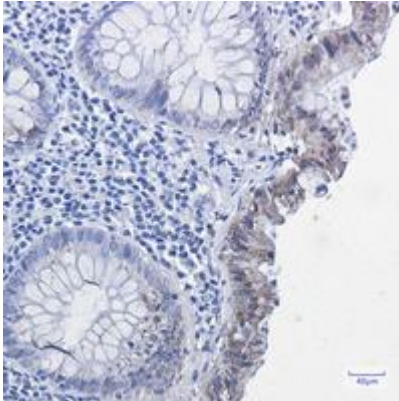
种属反应性: Human

**Modification:** Phosphorylated

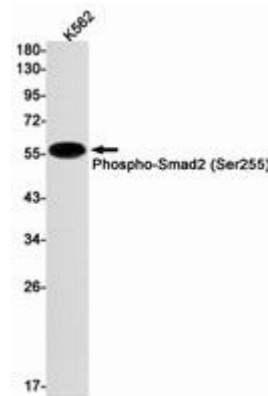
成分: PBS (without Mg<sup>2+</sup> and Ca<sup>2+</sup>), pH 7.3 containing 50% glycerol, 0.5% BSA and 0.02% sodium azide

研究领域: Signal Transduction

储存和运输: Store at -20°C. Avoid repeated freezing and thawing



Immunohistochemistry analysis of paraffin-embedded Human colon cancer using Phospho-Smad2 (Ser255) antibody. High-pressure and temperature Sodium Citrate pH 6.0 was used for antigen retrieval.



Western blot analysis of Phospho-Smad2 (Ser255) in K562 lysates using Phospho-Smad2 (Ser255) antibody.