

PHOSPHO-SMAD2/3 (THR8) RABBIT PAB

货号: N225092

产品全名: Phospho-Smad2/3 (Thr8) 兔多抗

基因符号 SMAD2; MADH2; MADR2; Mothers against decapentaplegic homolog 2; MAD homolog 2; Mothers against DPP homolog 2; JVI8-1; Mad-related protein 2; hMAD-2; SMAD family member 2; SMAD 2; Smad2; hSMAD2; SMAD3; MADH3; Mothers against decapentaplegic

UNIPROT ID: Q15796/P84022

背景: The protein encoded by this gene belongs to the SMAD, a family of proteins similar to the gene products of the Drosophila gene 'mothers against decapentaplegic' (Mad) and the C. elegans gene Sma. SMAD proteins are signal transducers and transcriptional modulators that mediate multiple signaling pathways.

抗原: The antiserum was produced against synthesized peptide derived from human Smad2/3 around the phosphorylation site of Thr8. AA range:1-50

经过测试的应用: WB,ELISA

推荐稀释比: WB: 1/500-1/1000 ELISA: 1/10000

种属反应性: Rabbit

克隆性: Rabbit Polyclonal

分子量: Calculated MW: 52 kDa; Observed MW: 48-52×60 kDa

亚型: IgG

纯化: Affinity Purified

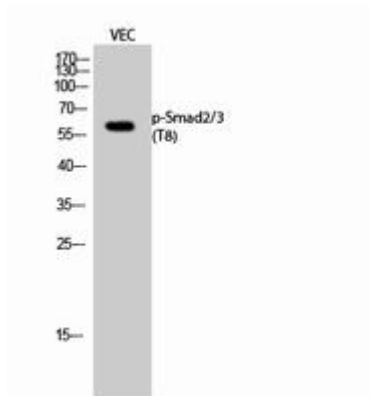
种属反应性: Human, Mouse and Rat

Modification: Phosphorylated

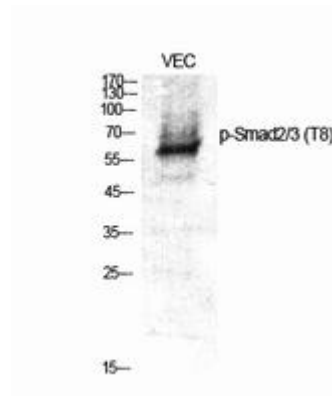
成分: PBS (without Mg²⁺ and Ca²⁺), pH 7.3 containing 50% glycerol, 0.5% BSA and 0.02% sodium azide

研究领域: Signal Transduction

储存和运输: Store at -20°C. Avoid repeated freezing and thawing



Western blot analysis of Phospho-Smad2/3 (Thr8) in VEC lysates using Phospho-Smad2/3 (T8) antibody.



Western blot analysis of Phospho-Smad2/3 (Thr8) in various lysates using Phospho-Smad2/3 (T8) antibody.