

PHOSPHO-RSK2 (SER227) RABBIT MAB

货号: N262854

产品全名: Phospho-RSK2 (Ser227) 兔单克隆抗体

基因符号 RPS6KA3; ISPK1; MAPKAPK1B; RSK2; Ribosomal protein S6 kinase alpha-3; S6K-alpha-3; 90 kDa ribosomal protein S6 kinase 3; p90-RSK 3; p90RSK3; Insulin-stimulated protein kinase 1; ISPK-1; MAP kinase-activated protein kinase 1b; MAPK-activated

UNIPROT ID: P51812

背景: This gene encodes a member of the RSK (ribosomal S6 kinase) family of serine/threonine kinases. This kinase contains 2 non-identical kinase catalytic domains and phosphorylates various substrates, including members of the mitogen-activated kinase (MAPK) signalling pathway. The activity of this protein has been implicated in controlling cell growth and differentiation. Mutations in this gene have been associated with Coffin-Lowry syndrome (CLS).

抗原: A synthetic phosphopeptide corresponding to residues surrounding Ser227 of human Rsk 2/MAPKAP Kinase 1b

经过测试的应用: WB,IP

推荐稀释比: WB: 1/500-1/1000 IP: 1/20

种属反应性: Rabbit

克隆性: Rabbit Monoclonal

克隆编号: R01-5B5

分子量: Calculated MW: 84 kDa; Observed MW: 84 kDa

亚型: IgG

纯化: Affinity Purified

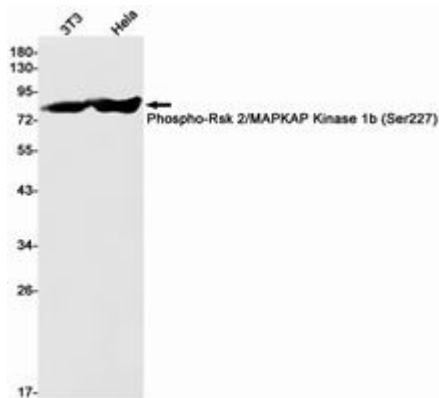
种属反应性: Human, Mouse and Rat

Modification: Phosphorylated

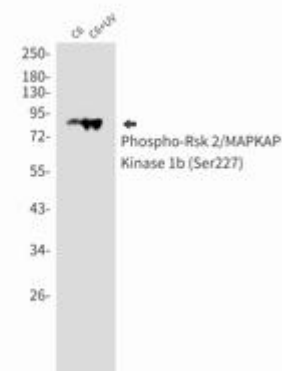
成分: PBS (without Mg²⁺ and Ca²⁺), pH 7.3 containing 50% glycerol, 0.5% BSA and 0.02% sodium azide

研究领域: Signal Transduction

储存和运输: Store at -20°C. Avoid repeated freezing and thawing



Western blot analysis of Phospho-Rsk 2/MAPKAP Kinase 1b (Ser227) in 3T3, HeLa lysates using Phospho-Rsk 2/MAPKAP Kinase 1b (Ser227) antibody.



Western blot analysis of Phospho-Rsk 2/MAPKAP Kinase 1b (Ser227) in C6, C6+UV lysates using Phospho-RSK2 (Ser227) antibody.