

## PHOSPHO-RSK1 P90 (THR359/SER363) RABBIT MAB

货号: N261728

产品全名: Phospho-RSK1 p90 (Thr359/Ser363) 兔单克隆抗体

基因符号 RPS6KA1; MAPKAPK1A; RSK1; Ribosomal protein S6 kinase alpha-1; S6K-alpha-1; 90 kDa ribosomal protein S6 kinase 1; p90-RSK 1; p90RSK1; p90S6K; MAP kinase-activated protein kinase 1a; MAPK-activated protein kinase 1a; MAPKAP kinase 1a; MAPKAP

**UNIPROT ID:** Q15418

**背景:** Rsk1 is a member of a family of 90kDa ribosomal protein S6 kinases, which includes Rsk1, Rsk2 and Rsk3. These are broadly expressed serine / threonine protein kinases activated in response to mitogenic stimuli, including extracellular signal regulated protein kinases Erk1 and Erk2. Rsk1 is activated by MAPK in vitro and in vivo via phosphorylation. Active Rsks appear to play a major role in transcriptional regulation by translocating to the nucleus and phosphorylating c-Fos and CREB.

**抗原:** A synthetic phosphopeptide corresponding to residues surrounding Thr359/Ser363 of human RSK1 p90

**经过测试的应用:** WB,IP

**推荐稀释比:** WB: 1/500-1/1000 IP: 1/20

**种属反应性:** Rabbit

**克隆性:** Rabbit Monoclonal

**克隆编号:** R01-5B1

**分子量:** Calculated MW: 83 kDa; Observed MW: 90 kDa

**亚型:** IgG

**纯化:** Affinity Purified

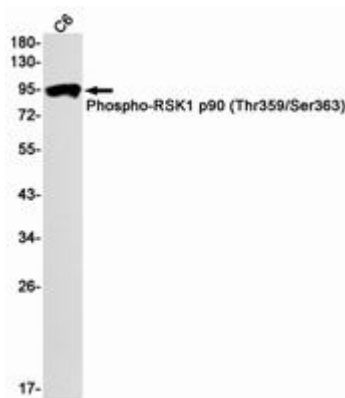
**种属反应性:** Human, Mouse and Rat

**Modification:** Phosphorylated

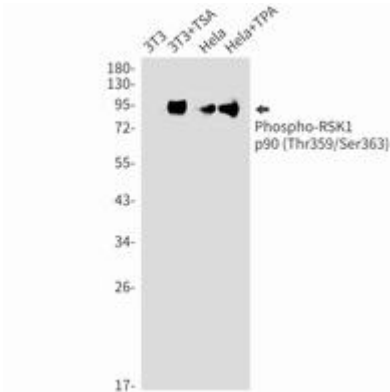
**成分:** PBS (without Mg<sup>2+</sup> and Ca<sup>2+</sup>), pH 7.3 containing 50% glycerol, 0.5% BSA and 0.02% sodium azide

**研究领域:** Signal Transduction

**储存和运输:** Store at -20°C. Avoid repeated freezing and thawing



Western blot analysis of Phospho-RSK1 p90 (Thr359/Ser363) in C6 lysates using Phospho-RSK1 p90 (Thr359/Ser363) antibody.



Western blot analysis of Phospho-RSK1 p90 (Thr359/Ser363) in 3T3, 3T3+TSA, HeLa, HeLa+TPA lysates using Phospho-RSK1 p90 (Thr359/Ser363) antibody.