

## PHOSPHO-RB2 P130 (SER952) RABBIT MAB

货号: N262824

产品全名: Phospho-Rb2 p130 (Ser952) 兔单克隆抗体

基因符号 Rb2; P130

**UNIPROT ID:** Q08999

**背景:** Key regulator of entry into cell division. Directly involved in heterochromatin formation by maintaining overall chromatin structure and, in particular, that of constitutive heterochromatin by stabilizing histone methylation. Recruits and targets histone methyltransferases KMT5B and KMT5C, leading to epigenetic transcriptional repression. Controls histone H4 'Lys-20' trimethylation. Probably acts as a transcription repressor by recruiting chromatin-modifying enzymes to promoters. Potent inhibitor of E2F-mediated trans-activation, associates preferentially with E2F5. Binds to cyclins A and E. Binds to and may be involved in the transforming capacity of the adenovirus E1A protein. May act as a tumor suppressor.

**抗原:** A synthetic phosphopeptide corresponding to residues surrounding Ser952 of human Rb2 p130

**经过测试的应用:** WB,IHC-F,IHC-P,ICC/IF

**推荐稀释比:** WB: 1/500-1/1000 IHC: 1/50-1/100 IF: 1/50-1/200

**种属反应性:** Rabbit

**克隆性:** Rabbit Monoclonal

**克隆编号:** R02-5D6

**分子量:** Calculated MW: 128 kDa; Observed MW: 128 kDa

**亚型:** IgG

**纯化:** Affinity Purified

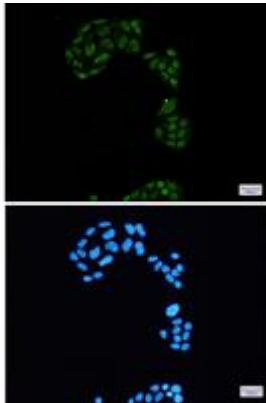
**种属反应性:** Human

**Modification:** Phosphorylated

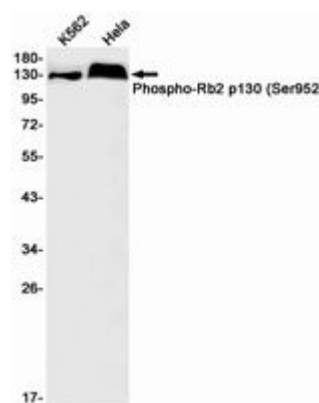
**成分:** PBS (without Mg<sup>2+</sup> and Ca<sup>2+</sup>), pH 7.3 containing 50% glycerol, 0.5% BSA and 0.02% sodium azide

**研究领域:** Cell Biology

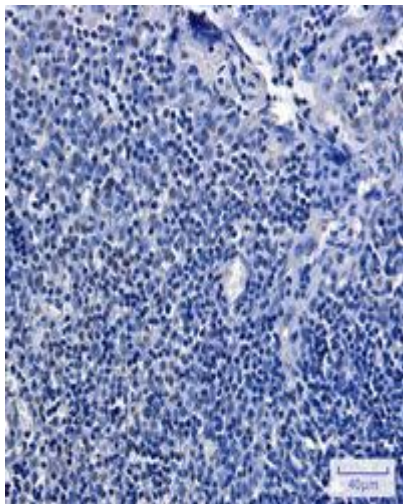
**储存和运输:** Store at -20°C. Avoid repeated freezing and thawing



Immunocytochemistry analysis of Rb2 p130 (Phospho-Ser952) (green) in HeLa using Rb2 p130 (Phospho-Ser952) antibody, and DAPI (blue)



Western blot analysis of Rb2 p130 (Phospho-Ser952) in K562, HeLa lysates using Phospho-Rb2 p130 (Ser952) antibody.



Immunohistochemistry analysis of paraffin-embedded Human tonsil using Rb2 p130 (Phospho-Ser952) antibody. High-pressure and temperature Sodium Citrate pH 6.0 was used for antigen retrieval.