

PHOSPHO-RB (THR356) RABBIT MAB

货号: N263194

产品全名: Phospho-Rb (Thr356) 兔单克隆抗体

基因符号 Rb1; Retinoblastoma-associated protein; p105-Rb; pRb; Rb; pp110

UNIPROT ID: P06400

背景: Cell cycle-dependent phosphorylation by a CDK inhibits Rb target binding and allows cell cycle progression. Rb inactivation and subsequent cell cycle progression likely requires an initial phosphorylation by cyclin D-CDK4/6 followed by cyclin E-CDK2 phosphorylation. Specificity of different CDK/cyclin complexes has been observed in vitro and cyclin D1 is required for Ser780 phosphorylation in vivo.

抗原: A synthetic phosphopeptide corresponding to residues surrounding Thr356 of human Rb

经过测试的应用: WB,IHC-P,IP

推荐稀释比: WB: 1/500-1/1000 IHC: 1/50-1/100 IP: 1/20

种属反应性: Rabbit

克隆性: Rabbit Monoclonal

克隆编号: R04-1C4

分子量: Calculated MW: 106 kDa; Observed MW: 110 kDa

亚型: IgG

纯化: Affinity Purified

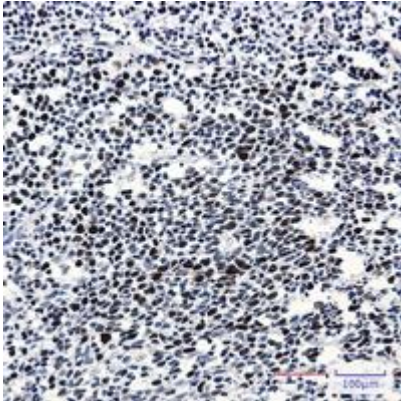
种属反应性: Human,Rat

Modification: Phosphorylated

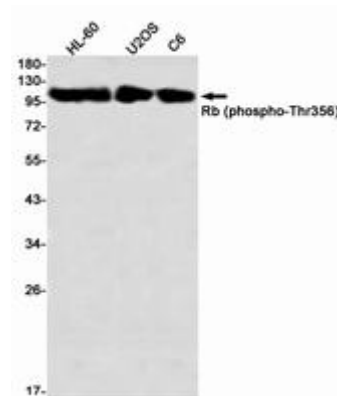
成分: PBS (without Mg²⁺ and Ca²⁺), pH 7.3 containing 50% glycerol, 0.5% BSA and 0.02% sodium azide

研究领域: Cell Biology

储存和运输: Store at -20°C. Avoid repeated freezing and thawing



Immunohistochemistry analysis of paraffin-embedded Human tonsil using Rb (Phospho-Thr356) antibody. High-pressure and temperature Sodium Citrate pH 6.0 was used for antigen retrieval.



Western blot analysis of Rb (Phospho-Thr356) in HL-60, U2OS, C6 lysates using Phospho-Rb (Thr356) antibody.