

PHOSPHO-RAF1 (SER259) RABBIT PAB

货号: N225740

产品全名: Phospho-Raf1 (Ser259) 兔多抗

基因符号 RAF1; RAF; RAF proto-oncogene serine/threonine-protein kinase; Proto-oncogene c-RAF; cRaf; Raf-1

UNIPROT ID: P04049

背景: Raf-1 is a MAP kinase kinase kinase (MAP3K) which functions downstream of the Ras family of membrane associated GTPases to which it binds directly. Once activated Raf-1 can phosphorylate to activate the dual specificity protein kinases MEK1 and MEK2 which in turn phosphorylate to activate the serine/threonine specific protein kinases ERK1 and ERK2.

抗原: A synthesized peptide derived from human Phospho-Raf1 (S259)

经过测试的应用: WB,IHC-P

推荐稀释比: WB: 1/500-1/1000 IHC: 1/50-1/100

种属反应性: Rabbit

克隆性: Rabbit Polyclonal

分子量: Calculated MW: 73 kDa; Observed MW: 73 kDa

亚型: IgG

纯化: Affinity Chromatography

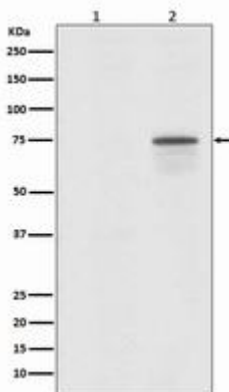
种属反应性: Human, Mouse and Rat

Modification: Phosphorylated

成分: PBS (without Mg²⁺ and Ca²⁺), pH 7.3 containing 50% glycerol, 0.5% BSA and 0.02% sodium azide

研究领域: Signal Transduction

储存和运输: Store at -20°C. Avoid repeated freezing and thawing



Western blot analysis of Phospho-Raf1 (S259) in (1) 293T lysates; (2) 293T lysates treated with Okadaic Acid + Calyculin A using Phospho-Raf1 (Ser259) antibody.



Product Description

Pioneering GTPase and Oncogene Product Development since 2010
