

PHOSPHO-RAD17 (SER656) RABBIT MAB

货号: N263190

产品全名: Phospho-Rad17 (Ser656) 兔单克隆抗体

基因符号 RAD17; R24L; Cell cycle checkpoint protein RAD17; hRad17; RF-C/activator 1 homolog

UNIPROT ID: O75943

背景: Essential for sustained cell growth, maintenance of chromosomal stability, and ATR-dependent checkpoint activation upon DNA damage.

抗原: A synthetic phosphopeptide corresponding to residues surrounding Ser656 of human Rad17

经过测试的应用: WB,IHC-F,IHC-P,ICC/IF

推荐稀释比: WB: 1/500-1/1000 IHC: 1/50-1/100 IF: 1/50-1/200

种属反应性: Rabbit

克隆性: Rabbit Monoclonal

克隆编号: R08-3F4

分子量: Calculated MW: 77 kDa; Observed MW: 80 kDa

亚型: IgG

纯化: Affinity Purified

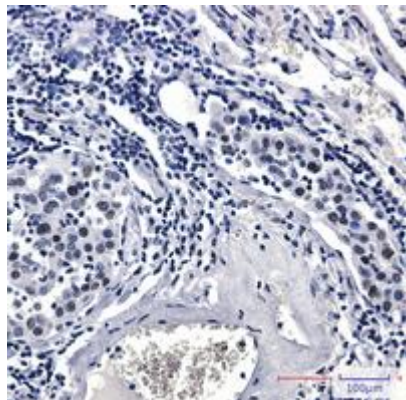
种属反应性: Human

Modification: Phosphorylated

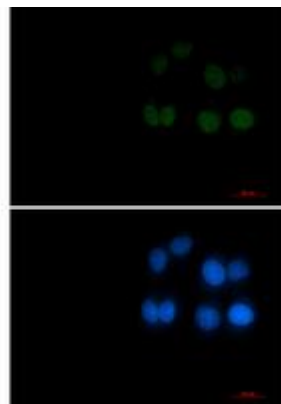
成分: PBS (without Mg²⁺ and Ca²⁺), pH 7.3 containing 50% glycerol, 0.5% BSA and 0.02% sodium azide

研究领域: Cell Biology

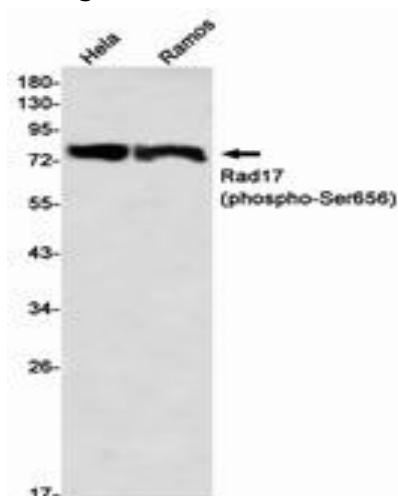
储存和运输: Store at -20°C. Avoid repeated freezing and thawing



Immunohistochemistry analysis of paraffin-embedded Human lung cancer tissue using Rad17 (Phospho-Ser656) antibody. High-pressure and temperature Sodium Citrate pH 6.0 was used for antigen retrieval.



Immunocytochemistry analysis of Phospho-Rad17 (Ser656) (green) in HeLa using Phospho-Rad17 (Ser656) antibody, and DAPI (blue).



Western blot analysis of Rad17 (Phospho-Ser656) in HeLa, Ramos lysates using Rad17 (Phospho-Ser656) antibody.