

PHOSPHO-PTEN (SER380) RABBIT PAB

货号: N225288

产品全名: Phospho-PTEN (Ser380) 兔多抗

基因符号 PTEN; MMAC1; TEPI; Phosphatidylinositol 3; 4; 5-trisphosphate 3-phosphatase and dual-specificity protein phosphatase PTEN; Mutated in multiple advanced cancers 1; Phosphatase and tensin homolog

UNIPROT ID: P60484

背景: Tumor suppressor. Acts as a dual-specificity protein phosphatase, dephosphorylating tyrosine-, serine- and threonine-phosphorylated proteins. Also acts as a lipid phosphatase, removing the phosphate in the D3 position of the inositol ring from phosphatidylinositol 3,4,5-trisphosphate, phosphatidylinositol 3,4-diphosphate, phosphatidylinositol 3-phosphate and inositol 1,3,4,5-tetrakisphosphate with order of substrate preference in vitro PtdIns(3,4,5)P3 > PtdIns(3,4)P2 > PtdIns3P > Ins(1,3,4,5)P4.

抗原: Synthetic peptide of human PTEN

经过测试的应用: IHC-P, ICC/IF

推荐稀释比: IHC: 1/50-1/100 ICC: 1/100-1/200

种属反应性: Rabbit

克隆性: Rabbit Polyclonal

分子量: -

亚型: IgG

纯化: Affinity Purified

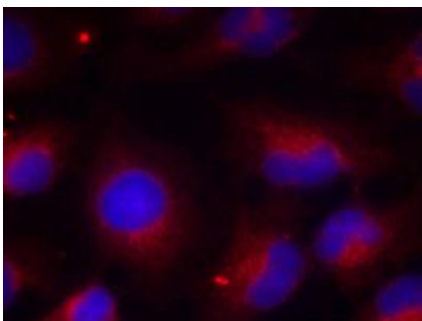
种属反应性: Human, Mouse and Rat

Modification: Phosphorylated

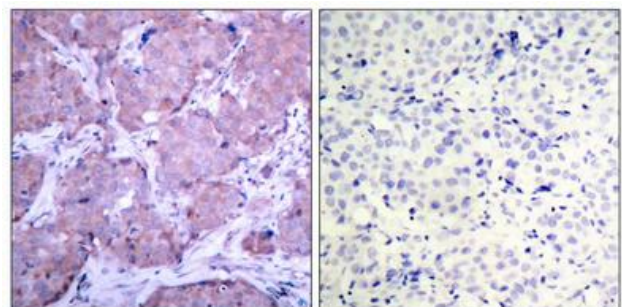
成分: PBS (without Mg²⁺ and Ca²⁺), pH 7.3 containing 50% glycerol, 0.5% BSA and 0.02% sodium azide

研究领域: Cell Biology

储存和运输: Store at -20°C. Avoid repeated freezing and thawing



Immunofluorescence analysis of Phospho-PTEN (Ser380) in Hela cells using PTEN (Phospho-Ser380) antibody, and DAPI (blue).



Immunohistochemistry analysis of paraffin-embedded Human breast carcinoma tissue using Phospho-PTEN (Ser380) antibody. High-pressure and temperature Sodium Citrate pH 6.0 was used for antigen retrieval. Sample with blocking peptide on the right.