

PHOSPHO-PRC1 (THR481) RABBIT MAB

货号: N262752

产品全名: Phospho-PRC1 (Thr481) 兔单克隆抗体

基因符号 Protein regulator of cytokinesis 1

UNIPROT ID: O43663

背景: Cross-links antiparrallel microtubules at an average distance of 35 nM. Essential for controlling the spatiotemporal formation of the midzone and successful cytokinesis. Required for KIF14 localization to the central spindle and midbody.

抗原: A synthetic phosphopeptide corresponding to residues surrounding Thr481 of human PRC1

经过测试的应用: WB,IHC-F,IHC-P,ICC/IF

推荐稀释比: WB: 1/500-1/1000 IHC: 1/50-1/100 IF: 1/50-1/200

种属反应性: Rabbit

克隆性: Rabbit Monoclonal

克隆编号: R06-2A3

分子量: Calculated MW: 72 kDa; Observed MW: 72 kDa

亚型: IgG

纯化: Affinity Purified

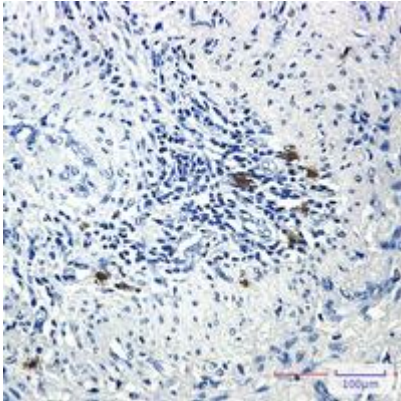
种属反应性: Human

Modification: Phosphorylated

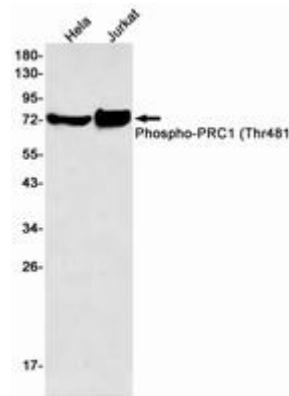
成分: PBS (without Mg²⁺ and Ca²⁺), pH 7.3 containing 50% glycerol, 0.5% BSA and 0.02% sodium azide

研究领域: Cell Biology

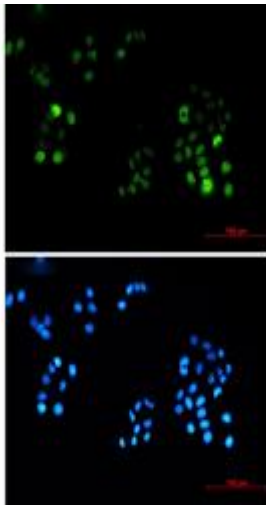
储存和运输: Store at -20°C. Avoid repeated freezing and thawing



Immunohistochemistry analysis of paraffin-embedded Human lung cancer using PRC1 (Phospho-Thr481) antibody. High-pressure and temperature Sodium Citrate pH 6.0 was used for antigen retrieval.



Western blot analysis of Phospho-PRC1 (Thr481) in Hela, Jurkat lysates using Phospho-PRC1 (Thr481) antibody.



Immunocytochemistry analysis of Phospho-PRC1 (Thr481) (green) in Hela using Phospho-PRC1 (Thr481) antibody, and DAPI (blue)