

PHOSPHO-PKC ZETA/LAMBDA (THR410/THR412) RABBIT MAB

货号: N263186

产品全名: Phospho-PKC zeta/lambda (Thr410/Thr412) 兔单克隆抗体
基因符号 PRKCG; PKCG; Protein kinase C gamma type; PKC-gamma

UNIPROT ID: P05129

背景: This is a calcium-activated, phospholipid-dependent, serine- and threonine-specific enzyme.

抗原: A synthetic phosphopeptide corresponding to residues surrounding Thr410 of human PKC zeta

经过测试的应用: WB,IHC-P

推荐稀释比: WB: 1/500-1/1000 IHC: 1/50-1/100

种属反应性: Rabbit

克隆性: Rabbit Monoclonal

克隆编号: R03-3D0

分子量: Calculated MW: 78 kDa; Observed MW: 78 kDa

亚型: IgG

纯化: Affinity Purified

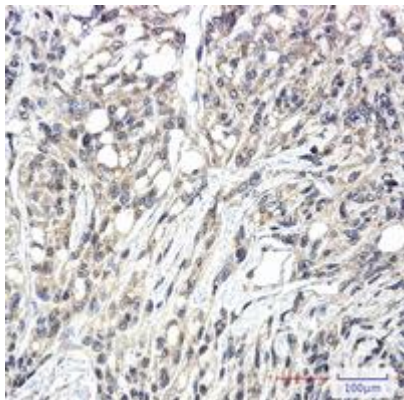
种属反应性: Human,Mouse

Modification: Phosphorylated

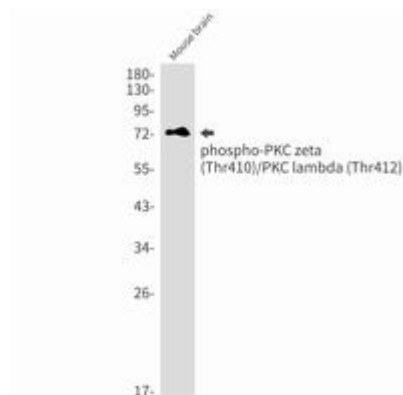
成分: PBS (without Mg²⁺ and Ca²⁺), pH 7.3 containing 50% glycerol, 0.5% BSA and 0.02% sodium azide

研究领域: Signal Transduction

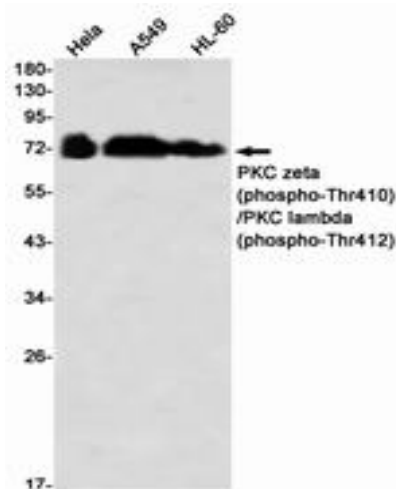
储存和运输: Store at -20°C. Avoid repeated freezing and thawing



Immunohistochemistry analysis of paraffin-embedded Human Brain using PKC zeta (Phospho-Thr410)/PKC lambda (Phospho-Thr412) antibody. High-pressure and temperature Sodium Citrate pH 6.0 was used for antigen retrieval.



Western blot analysis of Phospho-PKC zeta (Thr410)/PKC lambda (Thr412) in mouse brain lysates using Phospho-PKC zeta/lambda (Thr410/Thr412) antibody.



Western blot analysis of PKC zeta (Phospho-Thr410)/PKC lambda (Phospho-Thr412) in HeLa, A549, HL-60 lysates using PKC zeta (Phospho-Thr410)/PKC lambda (Phospho-Thr412) antibody.