

## PHOSPHO-PKC (SER660) RABBIT MAB

货号: N263183

产品全名: Phospho-PKC (Ser660) 兔单克隆抗体

基因符号 PRKCA; PKCA; PRKACA; Protein kinase C alpha type; PKC-A;  
PKC-alpha

**UNIPROT ID:** P17252/P05771/Q05655/Q02156/P24723/Q04759

背景: PKC alpha is an AGC kinase of the PKC family. A classical PKC downstream of many mitogenic and receptors. Classical PKCs are calcium-dependent enzymes that are activated by phosphatidylserine, diacylglycerol and phorbol esters.

抗原: A synthetic phosphopeptide corresponding to residues surrounding Ser660 of human PKC

经过测试的应用: WB,IHC-P

推荐稀释比: WB: 1/500-1/1000 IHC: 1/50-1/100

种属反应性: Rabbit

克隆性: Rabbit Monoclonal

克隆编号: R08-0H5

分子量: Calculated MW: 77 kDa; Observed MW: 78-85 kDa

亚型: IgG

纯化: Affinity Purified

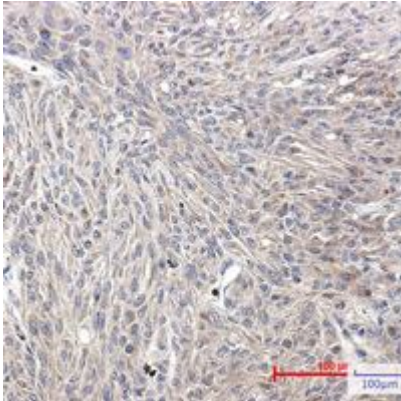
种属反应性: Human,Rat

**Modification:** Phosphorylated

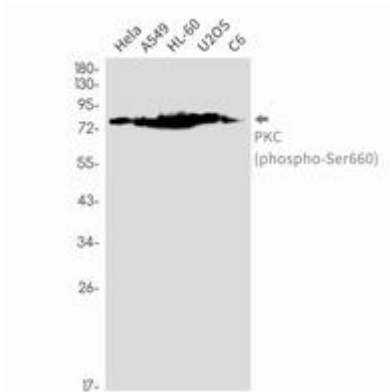
成分: PBS (without Mg<sup>2+</sup> and Ca<sup>2+</sup>), pH 7.3 containing 50% glycerol, 0.5% BSA and 0.02% sodium azide

研究领域: Signal Transduction

储存和运输: Store at -20°C. Avoid repeated freezing and thawing



Immunohistochemistry analysis of paraffin-embedded Human Brain using PKC (Phospho-Ser660) antibody. High-pressure and temperature Sodium Citrate pH 6.0 was used for antigen retrieval.



Western blot analysis of PKC (Phospho-Ser660) in Hela, A549, HL-60, U2OS, C6 lysates using Phospho-PKC (Ser660) antibody.