

PHOSPHO-PKC GAMMA (THR514) RABBIT MAB

货号: N262723

产品全名: Phospho-PKC gamma (Thr514) 兔单克隆抗体

基因符号 PRKCG; PKCG; Protein kinase C gamma type; PKC-gamma

UNIPROT ID: P05129

背景: This is a calcium-activated, phospholipid-dependent, serine- and threonine-specific enzyme.

抗原: A synthetic phosphopeptide corresponding to residues surrounding Thr514 of human PKC

经过测试的应用: WB,IHC-P,IP

推荐稀释比: WB: 1/500-1/1000 IHC: 1/50-1/100 IP: 1/20

种属反应性: Rabbit

克隆性: Rabbit Monoclonal

克隆编号: R02-4F3

分子量: Calculated MW: 78 kDa; Observed MW: 78-85 kDa

亚型: IgG

纯化: Affinity Purified

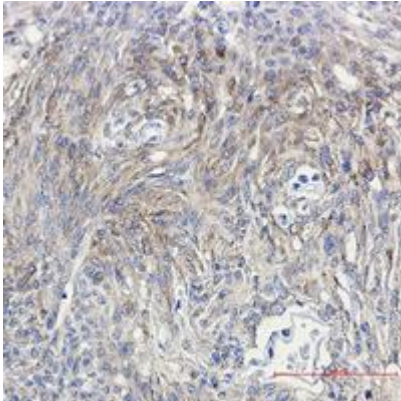
种属反应性: Human, Mouse and Rat

Modification: Phosphorylated

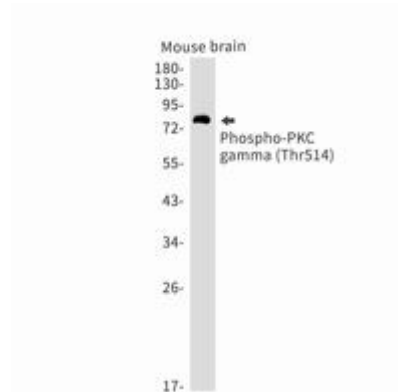
成分: PBS (without Mg²⁺ and Ca²⁺), pH 7.3 containing 50% glycerol, 0.5% BSA and 0.02% sodium azide

研究领域: Signal Transduction

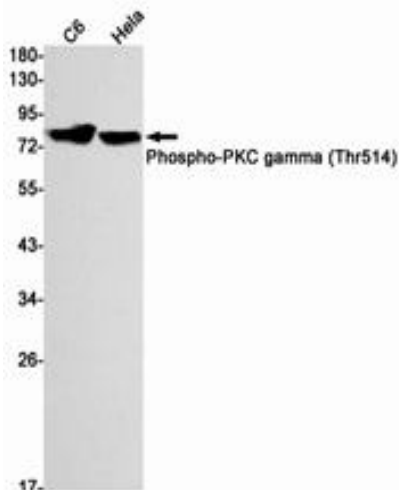
储存和运输: Store at -20°C. Avoid repeated freezing and thawing



Immunohistochemistry analysis of paraffin-embedded Human Brain using PKC (Phospho-Thr514) antibody. High-pressure and temperature Sodium Citrate pH 6.0 was used for antigen retrieval.



Western blot analysis of Phospho-PKC gamma (Thr514) in mouse brain lysates using Phospho-PKC gamma (Thr514) antibody.



Western blot analysis of Phospho-PKC gamma (Thr514) in C6, HeLa lysates using Phospho-PKC gamma (Thr514) antibody.