

PHOSPHO-PKC EPSILON (SER729) RABBIT PAB

货号: N225514

产品全名: Phospho-PKC epsilon (Ser729) 兔多抗

基因符号 nPKC epsilon; PKCE; Pkcea; PRKCE; Protein kinase C epsilon; Protein kinase C epsilon type

UNIPROT ID: Q02156

背景: protein kinase C epsilon (PRKCE) Homo sapiens Protein kinase C (PKC) is a family of serine- and threonine-specific protein kinases that can be activated by calcium and the second messenger diacylglycerol. PKC family members phosphorylate a wide variety of protein targets and are known to be involved in diverse cellular signaling pathways. PKC family members also serve as major receptors for phorbol esters, a class of tumor promoters. Each member of the PKC family has a specific expression profile and is believed to play a distinct role in cells. The protein encoded by this gene is one of the PKC family members.

抗原: Synthesized peptide derived from human PKC epsilon (Phospho-S729). AA range:688-737

经过测试的应用: WB,IHC-P,ELISA

推荐稀释比: WB: 1/500-1/1000 IHC: 1/50-1/100 ELISA: 1/10000

种属反应性: Rabbit

克隆性: Rabbit Polyclonal

分子量: Calculated MW: 84 kDa; Observed MW: 84 kDa

亚型: IgG

纯化: Affinity Purified

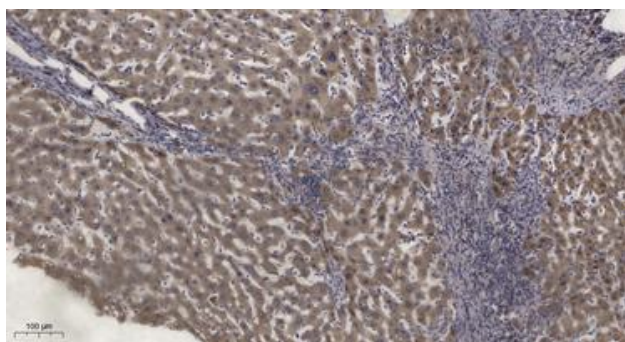
种属反应性: Human, Mouse and Rat

Modification: Phosphorylated

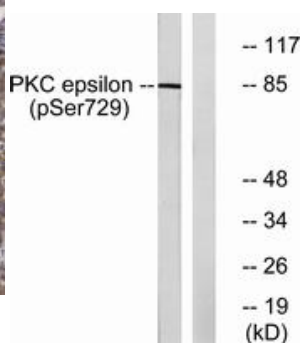
成分: PBS (without Mg²⁺ and Ca²⁺), pH 7.3 containing 50% glycerol, 0.5% BSA and 0.02% sodium azide

研究领域: Signal Transduction

储存和运输: Store at -20°C. Avoid repeated freezing and thawing



Immunohistochemistry analysis of paraffin-embedded Human Liver Cancer using Phospho-PKC epsilon (Ser729) antibody. High-pressure and temperature Tris-EDTA pH 9.0 was used for antigen retrieval.



Western blot analysis of Phospho-PKC epsilon (Ser729) in HeLa lysates using Phospho-PKC epsilon (Ser729) antibody.



Product Description

Pioneering GTPase and Oncogene Product Development since 2010
