

## PHOSPHO-PKC DELTA (SER299) RABBIT MAB

货号: N263185

产品全名: Phospho-PKC delta (Ser299) 兔单克隆抗体

基因符号 Protein kinase C delta type; Tyrosine-protein kinase PRKCD; nPKC-delta

**UNIPROT ID:** Q05655

**背景:** Protein kinase C (PKC) is a family of serine- and threonine-specific protein kinases that can be activated by calcium and the second messenger diacylglycerol. PKC family members phosphorylate a wide variety of protein targets and are known to be involved in diverse cellular signaling pathways.

**抗原:** A synthetic phosphopeptide corresponding to residues surrounding Ser299 of human PKC delta

**经过测试的应用:** WB,IHC-P,IP

**推荐稀释比:** WB: 1/500-1/1000 IHC: 1/50-1/100 IP: 1/20

**种属反应性:** Rabbit

**克隆性:** Rabbit Monoclonal

**克隆编号:** R06-4A5

**分子量:** Calculated MW: 78 kDa; Observed MW: 78 kDa

**亚型:** IgG

**纯化:** Affinity Purified

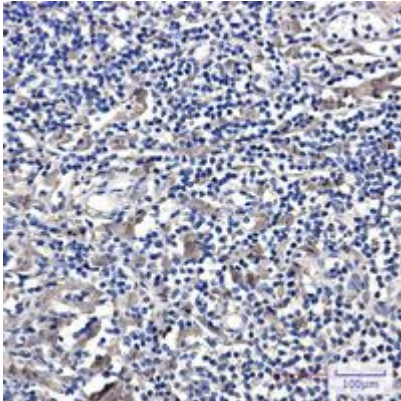
**种属反应性:** Human

**Modification:** Phosphorylated

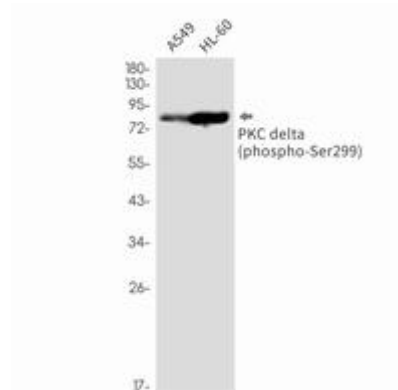
**成分:** PBS (without Mg<sup>2+</sup> and Ca<sup>2+</sup>), pH 7.3 containing 50% glycerol, 0.5% BSA and 0.02% sodium azide

**研究领域:** Signal Transduction

**储存和运输:** Store at -20°C. Avoid repeated freezing and thawing



Immunohistochemistry analysis of paraffin-embedded Human tonsil using PKC delta (Phospho-Ser299) antibody. High-pressure and temperature Sodium Citrate pH 6.0 was used for antigen retrieval.



Western blot analysis of Phospho-PKC delta (Ser299) in A549, HL-60 lysates using Phospho-PKC delta (Ser299) antibody.