

## PHOSPHO-PKC ALPHA (THR638) RABBIT MAB

货号: N261726

产品全名: Phospho-PKC alpha (Thr638) 兔单克隆抗体

基因符号 PRKCA; PKCA; PRKACA; Protein kinase C alpha type; PKC-A;  
PKC-alpha

**UNIPROT ID:** P17252

**背景:** PKC alpha is an AGC kinase of the PKC family. A classical PKC downstream of many mitogenic and receptors. Classical PKCs are calcium-dependent enzymes that are activated by phosphatidylserine, diacylglycerol and phorbol esters.

**抗原:** A synthetic phosphopeptide corresponding to residues surrounding Thr638 of human PKC alpha

**经过测试的应用:** WB,IHC-P,IP

**推荐稀释比:** WB: 1/500-1/1000 IHC: 1/50-1/100 IP: 1/20

**种属反应性:** Rabbit

**克隆性:** Rabbit Monoclonal

**克隆编号:** R09-7C7

**分子量:** Calculated MW: 77 kDa; Observed MW: 80 kDa

**亚型:** IgG

**纯化:** Affinity Purified

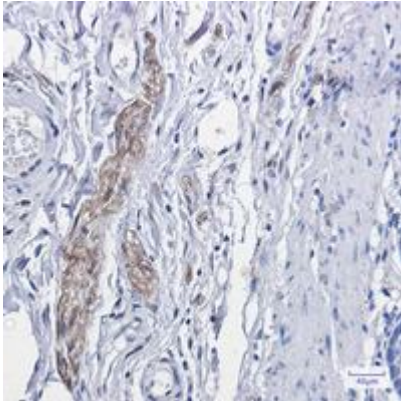
**种属反应性:** Human, Mouse and Rat

**Modification:** Phosphorylated

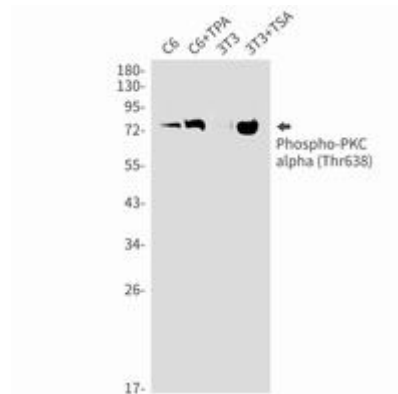
**成分:** PBS (without Mg<sup>2+</sup> and Ca<sup>2+</sup>), pH 7.3 containing 50% glycerol, 0.5% BSA and 0.02% sodium azide

**研究领域:** Epigenetics&Histone phosphorylation

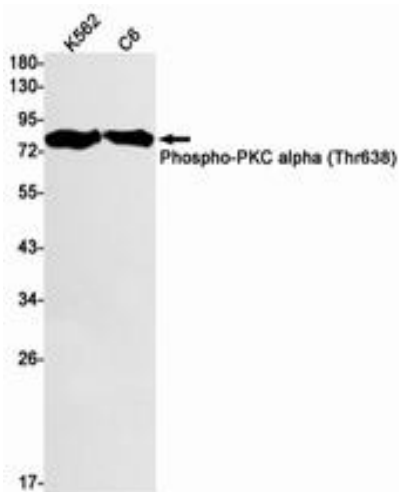
**储存和运输:** Store at -20°C. Avoid repeated freezing and thawing



Immunohistochemistry analysis of paraffin-embedded Human colon cancer using Phospho-PKC alpha (Thr638) antibody. High-pressure and temperature Sodium Citrate pH 6.0 was used for antigen retrieval.



Western blot analysis of Phospho-PKC alpha (Thr638) in C6, C6+TPA, 3T3, 3T3+TSA lysates using Phospho-PKC alpha (Thr638) antibody.



Western blot analysis of Phospho-PKC alpha (Thr638) in K562, C6 lysates using Phospho-PKC alpha (Thr638) antibody.