

PHOSPHO-PKC ALPHA (SER657) RABBIT MAB

货号: N263184

产品全名: Phospho-PKC alpha (Ser657) 兔单克隆抗体

基因符号 PRKCA; PKCA; PRKACA; Protein kinase C alpha type; PKC-A;
PKC-alpha

UNIPROT ID: P17252

背景: PKC alpha is an AGC kinase of the PKC family. A classical PKC downstream of many mitogenic and receptors. Classical PKCs are calcium-dependent enzymes that are activated by phosphatidylserine, diacylglycerol and phorbol esters.

抗原: A synthetic phosphopeptide corresponding to residues surrounding Ser657 of human PKC alpha

经过测试的应用: WB,IHC-P

推荐稀释比: WB: 1/500-1/1000 IHC: 1/50-1/100

种属反应性: Rabbit

克隆性: Rabbit Monoclonal

克隆编号: R05-813

分子量: Calculated MW: 77 kDa; Observed MW: 80 kDa

亚型: IgG

纯化: Affinity Purified

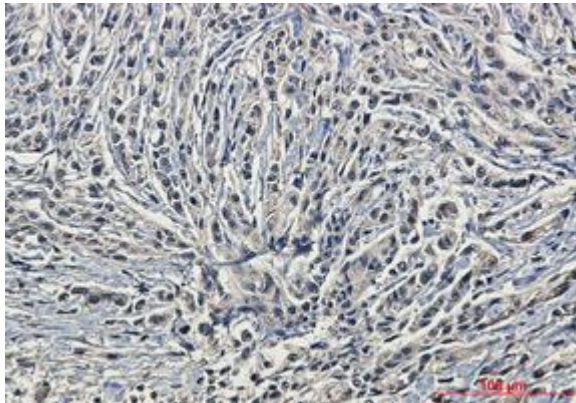
种属反应性: Human, Mouse and Rat

Modification: Phosphorylated

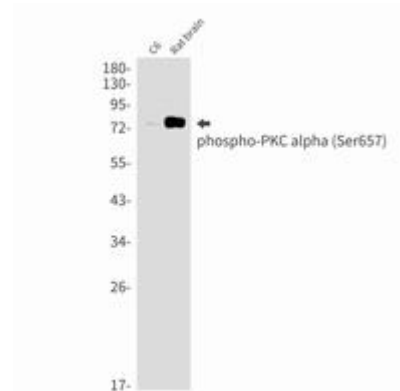
成分: PBS (without Mg²⁺ and Ca²⁺), pH 7.3 containing 50% glycerol, 0.5% BSA and 0.02% sodium azide

研究领域: Signal Transduction

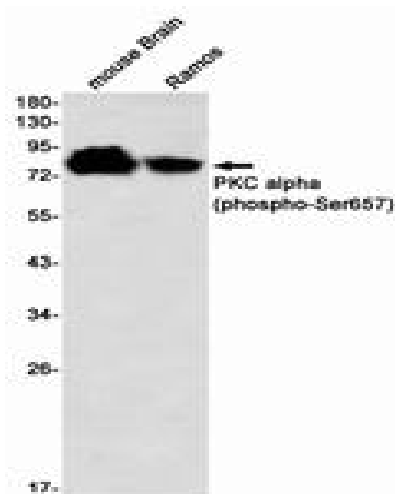
储存和运输: Store at -20°C. Avoid repeated freezing and thawing



Immunohistochemistry analysis of paraffin-embedded Human brain using Phospho-PKC alpha (Ser657) antibody. High-pressure and temperature Sodium Citrate pH 6.0 was used for antigen retrieval.



Western blot analysis of Phospho-PKC alpha (Ser657) in C6, rat brain lysates using Phospho-PKC alpha (Ser657) antibody.



Western blot analysis of PKC alpha (Phospho-Ser657) in mouse Brain, Ramos lysates using PKC alpha (Phospho-Ser657) antibody.