

PHOSPHO-PARVIN ALPHA (SER8) RABBIT MAB

货号: N262674

产品全名: Phospho-Parvin alpha (Ser8) 兔单克隆抗体

基因符号 MXRA2; CH-ILKBP

UNIPROT ID: Q9NVD7

背景: Plays a role in sarcomere organization and in smooth muscle cell contraction. Required for normal development of the embryonic cardiovascular system, and for normal septation of the heart outflow tract. Plays a role in sprouting angiogenesis and is required for normal adhesion of vascular smooth muscle cells to endothelial cells during blood vessel development. Plays a role in the reorganization of the actin cytoskeleton, formation of lamellipodia and ciliogenesis. Plays a role in the establishment of cell polarity, cell adhesion, cell spreading, and directed cell migration.

抗原: A synthetic phosphopeptide corresponding to residues surrounding Ser8 of human Parvin alpha

经过测试的应用: WB, ICC/IF

推荐稀释比: WB: 1/500-1/1000 IF: 1/50-1/200

种属反应性: Rabbit

克隆性: Rabbit Monoclonal

克隆编号: R05-7A7

分子量: Calculated MW: 42 kDa; Observed MW: 42 kDa

亚型: IgG

纯化: Affinity Purified

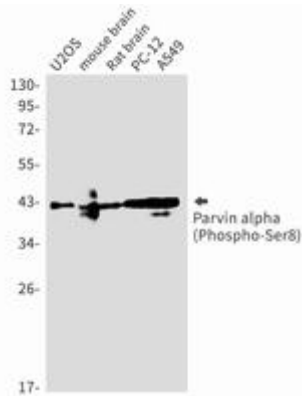
种属反应性: Human, Mouse and Rat

Modification: Phosphorylated

成分: PBS (without Mg²⁺ and Ca²⁺), pH 7.3 containing 50% glycerol, 0.5% BSA and 0.02% sodium azide

研究领域: -

储存和运输: Store at -20°C. Avoid repeated freezing and thawing



Western blot analysis of Parvin alpha (Phospho-Ser8) in U2OS, mouse brain, rat brain, PC-12, A549 lysates using Phospho-Parvin alpha (Ser8) antibody.