

PHOSPHO-PAK1/2/3 (SER144/SER141/SER154) RABBIT MAB

货号: N262669

产品全名: Phospho-PAK1/2/3 (Ser144/Ser141/Ser154) 兔单克隆抗体

基因符号 PAK3; OPHN3; Serine/threonine-protein kinase PAK 3; Beta-PAK; Oligophrenin-3; p21-activated kinase 3; PAK-3

UNIPROT ID: O75914

背景: PAK proteins are critical effectors that link Rho GTPases to cytoskeleton reorganization and nuclear signaling. PAK proteins serve as targets for the small GTP binding proteins Cdc42 and RAC and have been implicated in a wide range of biological activities. PAK3 forms an activated complex with GTP-bound RAS-like (P21), CDC2 and RAC1 proteins which then catalyzes a variety of targets.

抗原: A synthetic phosphopeptide corresponding to residues surrounding Ser144 of human PAK1

经过测试的应用: WB,IHC-F,IHC-P,ICC/IF,IP

推荐稀释比: WB: 1/500-1/1000 IHC: 1/50-1/100 IF: 1/50-1/200 IP: 1/20

种属反应性: Rabbit

克隆性: Rabbit Monoclonal

克隆编号: R04-2A4

分子量: Calculated MW: 62 kDa; Observed MW: 62 kDa

亚型: IgG

纯化: Affinity Purified

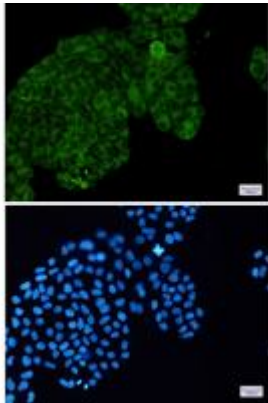
种属反应性: Human, Mouse and Rat

Modification: Phosphorylated

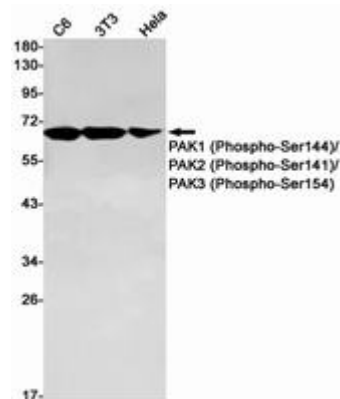
成分: PBS (without Mg²⁺ and Ca²⁺), pH 7.3 containing 50% glycerol, 0.5% BSA and 0.02% sodium azide

研究领域: Neuroscience

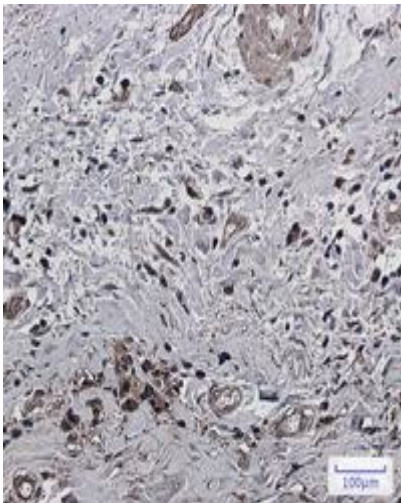
储存和运输: Store at -20°C. Avoid repeated freezing and thawing



Immunocytochemistry analysis of PAK1 (Phospho-Ser144)/PAK2 (Phospho-Ser141)/PAK3 (Phospho-Ser154) (green) in HeLa using PAK1 (Phospho-Ser144)/PAK2 (Phospho-Ser141)/PAK3 (Phospho-Ser154) antibody, and DAPI (blue)



Western blot analysis of PAK1 (Phospho-Ser144)/PAK2 (Phospho-Ser141)/PAK3 (Phospho-Ser154) in C6, 3T3, HeLa lysates using Phospho-PAK1/2/3 (Ser144/Ser141/Ser154) antibody.



Immunohistochemistry analysis of paraffin-embedded Human breast cancer using Phospho-PAK1(Ser144)/2(Ser141)/3 (Ser154) antibody. High-pressure and temperature Sodium Citrate pH 6.0 was used for antigen retrieval.