

## PHOSPHO-P27 KIP 1 (SER10) RABBIT MAB

货号: N262651

产品全名: Phospho-p27 Kip 1 (Ser10) 兔单克隆抗体

基因符号 CDKN1B; KIP1; Cyclin-dependent kinase inhibitor 1B; Cyclin-dependent kinase inhibitor p27; p27Kip1

**UNIPROT ID:** P46527

**背景:** The encoded protein binds to and prevents the activation of cyclin E-CDK2 or cyclin D-CDK4 complexes, and thus controls the cell cycle progression at G1. The degradation of this protein, which is triggered by its CDK dependent phosphorylation and subsequent ubiquitination by SCF complexes, is required for the cellular transition from quiescence to the proliferative state.

**抗原:** A synthetic phosphopeptide corresponding to residues surrounding Ser10 of human p27 KIP 1

**经过测试的应用:** WB,IHC-P,IP

**推荐稀释比:** WB: 1/500-1/1000 IHC: 1/50-1/100 IP: 1/20

**种属反应性:** Rabbit

**克隆性:** Rabbit Monoclonal

**克隆编号:** R05-4F1

**分子量:** Calculated MW: 22 kDa; Observed MW: 27 kDa

**亚型:** IgG

**纯化:** Affinity Purified

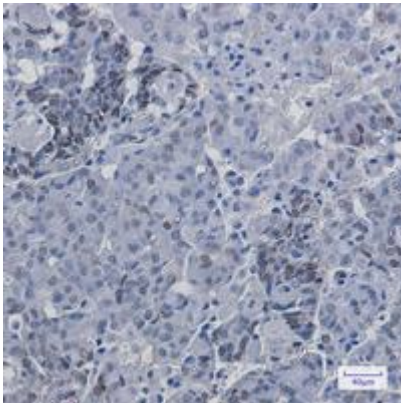
**种属反应性:** Human, Mouse and Rat

**Modification:** Phosphorylated

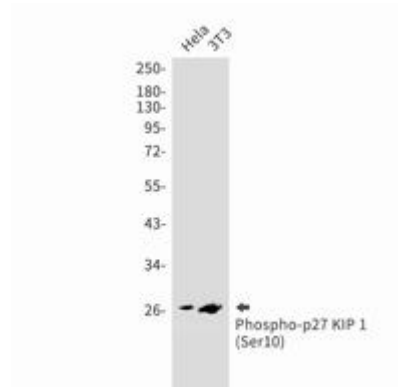
**成分:** PBS (without Mg<sup>2+</sup> and Ca<sup>2+</sup>), pH 7.3 containing 50% glycerol, 0.5% BSA and 0.02% sodium azide

**研究领域:** Cell Biology

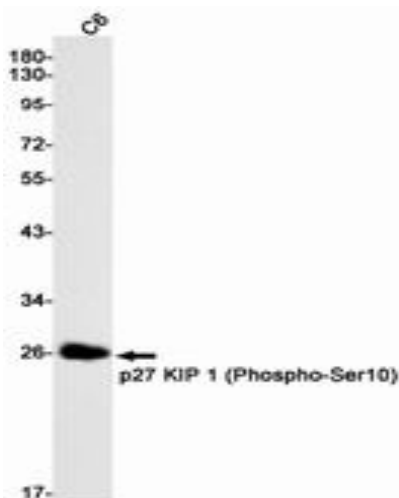
**储存和运输:** Store at -20°C. Avoid repeated freezing and thawing



Immunohistochemistry analysis of paraffin-embedded Human breast cancer using p27 KIP 1 (Phospho-Ser10) antibody. High-pressure and temperature Sodium Citrate pH 6.0 was used for antigen retrieval.



Western blot analysis of Phospho-p27 KIP 1 (Ser10) in HeLa, 3T3 lysates using Phospho-p27 KIP 1 (Ser10) antibody.



Western blot analysis of Phospho-p27 KIP 1 (Ser10) in C6 lysates using Phospho-p27 KIP 1 (Ser10) antibody.