

## PHOSPHO-OXSRI (THR185) RABBIT PAB

货号: N225307

产品全名: Phospho-OXSRI (Thr185) 兔多抗

基因符号 OSRI

**UNIPROT ID:** O95747

背景: Phosphorylates RELL1, RELL2 and RELT.

抗原: Synthetic peptide of human OXSRI

经过测试的应用: WB,IHC-P

推荐稀释比: WB: 1/500-1/1000 IHC: 1/50-1/100

种属反应性: Rabbit

克隆性: Rabbit Polyclonal

分子量: Calculated MW: 58 kDa; Observed MW: 65 kDa

亚型: IgG

纯化: Affinity Purified

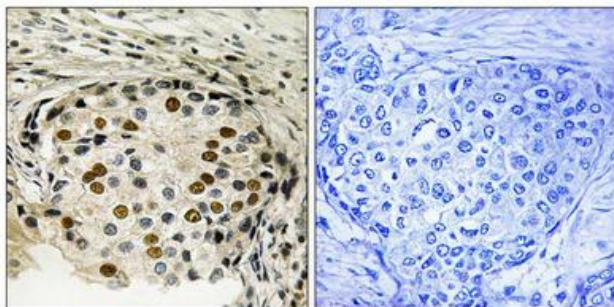
种属反应性: Human

**Modification:** Phosphorylated

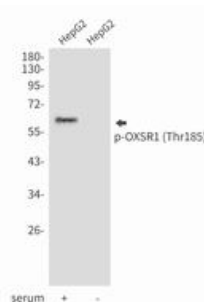
成分: PBS (without Mg<sup>2+</sup> and Ca<sup>2+</sup>), pH 7.3 containing 50% glycerol, 0.5% BSA and 0.02% sodium azide

研究领域: Signal Transduction

储存和运输: Store at -20°C. Avoid repeated freezing and thawing



Immunohistochemistry analysis of paraffin-embedded Human breast carcinoma tissue using OSRI (Phospho-Thr185) antibody. High-pressure and temperature Sodium Citrate pH 6.0 was used for antigen retrieval. Sample with blocking peptide on the right.



Western blot analysis of Phospho-OXSRI (Thr185) in HepG2 lysates using Phospho-OXSRI (Thr185) antibody.