

## PHOSPHO-MSK1 (SER376) RABBIT MAB

货号: N262540

产品全名: Phospho-MSK1 (Ser376) 兔单克隆抗体

基因符号 RPS6KA5; MSK1; Ribosomal protein S6 kinase alpha-5; S6K-alpha-5; 90 kDa ribosomal protein S6 kinase 5; Nuclear mitogen- and stress-activated protein kinase 1; RSK-like protein kinase; RSKL

**UNIPROT ID:** O75582

**背景:** Serine/threonine-protein kinase that is required for the mitogen or stress-induced phosphorylation of the transcription factors CREB1 and ATF1 and for the regulation of the transcription factors RELA, STAT3 and ETV1/ER81, and that contributes to gene activation by histone phosphorylation and functions in the regulation of inflammatory genes. Phosphorylates CREB1 and ATF1 in response to mitogenic or stress stimuli such as UV-C irradiation, epidermal growth factor (EGF) and anisomycin.

**抗原:** A synthetic phosphopeptide corresponding to residues surrounding Ser376 of human MSK1

**经过测试的应用:** WB,IHC-P,IP

**推荐稀释比:** WB: 1/500-1/1000 IHC: 1/50-1/100 IP: 1/20

**种属反应性:** Rabbit

**克隆性:** Rabbit Monoclonal

**克隆编号:** R01-9A9

**分子量:** Calculated MW: 90 kDa; Observed MW: 90 kDa

**亚型:** IgG

**纯化:** Affinity Purified

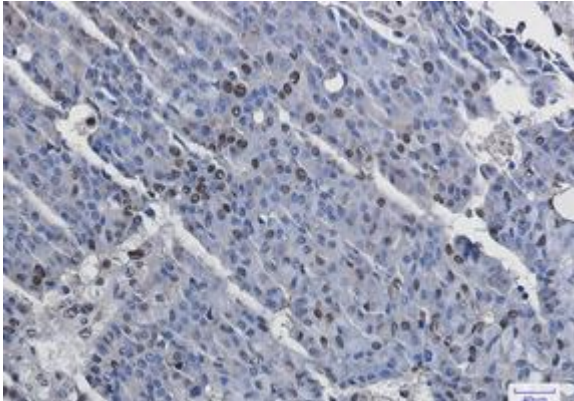
**种属反应性:** Human,Rat

**Modification:** Phosphorylated

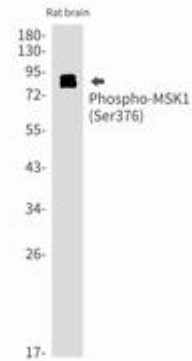
**成分:** PBS (without Mg<sup>2+</sup> and Ca<sup>2+</sup>), pH 7.3 containing 50% glycerol, 0.5% BSA and 0.02% sodium azide

**研究领域:** Signal Transduction

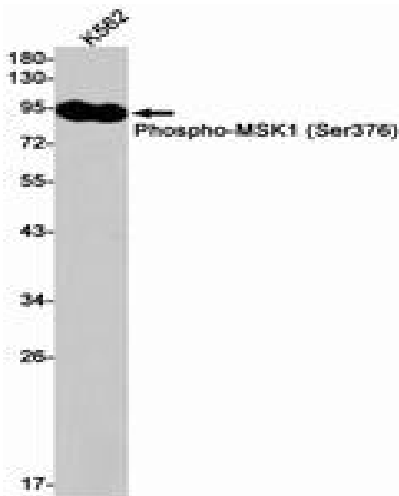
**储存和运输:** Store at -20°C. Avoid repeated freezing and thawing



Immunohistochemistry analysis of paraffin-embedded Human breast cancer using MSK1 (Phospho-Ser376) antibody. High-pressure and temperature Sodium Citrate pH 6.0 was used for antigen retrieval.



Western blot analysis of Phospho-MSK1 (Ser376) in rat brain lysates using Phospho-MSK1 (Ser376) antibody.



Western blot analysis of Phospho-MSK1 (Ser376) in K562 lysates using Phospho-MSK1 (Ser376) antibody.