

PHOSPHO-MSK1 (SER360) RABBIT MAB

货号: N261706

产品全名: Phospho-MSK1 (Ser360) 兔单克隆抗体

基因符号 RPS6KA5; MSK1; Ribosomal protein S6 kinase alpha-5; S6K-alpha-5; 90 kDa ribosomal protein S6 kinase 5; Nuclear mitogen- and stress-activated protein kinase 1; RSK-like protein kinase; RSKL

UNIPROT ID: O75582

背景: Serine/threonine-protein kinase that is required for the mitogen or stress-induced phosphorylation of the transcription factors CREB1 and ATF1 and for the regulation of the transcription factors RELA, STAT3 and ETV1/ER81, and that contributes to gene activation by histone phosphorylation and functions in the regulation of inflammatory genes. Phosphorylates CREB1 and ATF1 in response to mitogenic or stress stimuli such as UV-C irradiation, epidermal growth factor (EGF) and anisomycin.

抗原: A synthetic phosphopeptide corresponding to residues surrounding Ser360 of human MSK1

经过测试的应用: WB, ICC/IF, IP

推荐稀释比: WB: 1/500-1/1000 IF: 1/50-1/200 IP: 1/20

种属反应性: Rabbit

克隆性: Rabbit Monoclonal

克隆编号: R03-1G8

分子量: Calculated MW: 90 kDa; Observed MW: 90 kDa

亚型: IgG

纯化: Affinity Purified

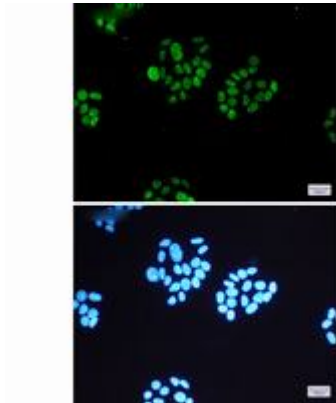
种属反应性: Human, Mouse and Rat, Hamster

Modification: Phosphorylated

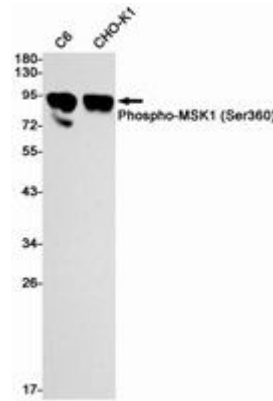
成分: PBS (without Mg²⁺ and Ca²⁺), pH 7.3 containing 50% glycerol, 0.5% BSA and 0.02% sodium azide

研究领域: Epigenetics & Histone phosphorylation

储存和运输: Store at -20°C. Avoid repeated freezing and thawing



Immunocytochemistry analysis of MSK1 (Phospho-S360)(green) in HeLa using MSK1 (Phospho-S360) antibody, and DAPI(blue)



Western blot analysis of Phospho-MSK1 (Ser360) in C6, CHO-K1 lysates using Phospho-MSK1 (Ser360) antibody.