

PHOSPHO-MEK1 (SER298) RABBIT MAB

货号: N262504

产品全名: Phospho-MEK1 (Ser298) 兔单克隆抗体

基因符号 MAP2K1; MEK1; PRKMK1; Dual specificity mitogen-activated protein kinase kinase 1; MAP kinase kinase 1; MAPKK 1; MKK1; ERK activator kinase 1; MAPK/ERK kinase 1; MEK 1

UNIPROT ID: Q02750

背景: The protein encoded by this gene is a member of the dual specificity protein kinase family, which acts as a mitogen-activated protein (MAP) kinase kinase. MAP kinases, also known as extracellular signal-regulated kinases (ERKs), act as an integration point for multiple biochemical signals.

抗原: A synthetic phosphopeptide corresponding to residues surrounding Ser298 of human MEK1

经过测试的应用: WB, ICC/IF

推荐稀释比: WB: 1/500-1/1000 IF: 1/50-1/200

种属反应性: Rabbit

克隆性: Rabbit Monoclonal

克隆编号: R07-116

分子量: Calculated MW: 43 kDa; Observed MW: 43 kDa

亚型: IgG

纯化: Affinity Purified

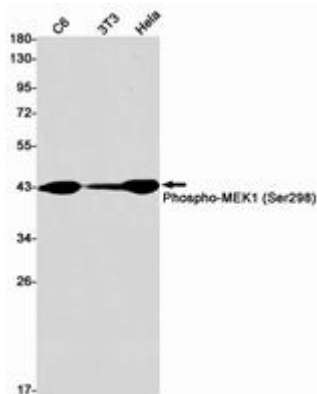
种属反应性: Human, Mouse and Rat

Modification: Phosphorylated

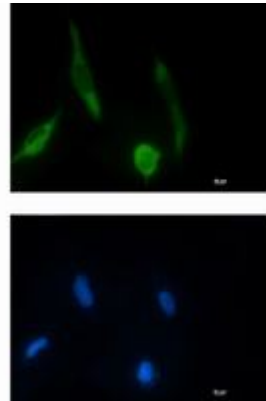
成分: PBS (without Mg²⁺ and Ca²⁺), pH 7.3 containing 50% glycerol, 0.5% BSA and 0.02% sodium azide

研究领域: Signal Transduction

储存和运输: Store at -20°C. Avoid repeated freezing and thawing



Western blot analysis of Phospho-MEK1 (Ser298) in C6, 3T3, HeLa lysates using Phospho-MEK1 (Ser298) antibody.



Immunocytochemistry analysis of Phospho-MEK1 (Ser298) (green) in HT-1080 using Phospho-MEK1 (Ser298) antibody, and DAPI (blue).