

PHOSPHO-MDM2 (SER166) RABBIT MAB

货号: N261731

产品全名: Phospho-MDM2 (Ser166) 兔单克隆抗体

基因符号 Double minute 2 protein; Hdm2; Oncoprotein Mdm2

UNIPROT ID: Q00987

背景: E3 ubiquitin-protein ligase that mediates ubiquitination of p53/TP53, leading to its degradation by the proteasome.

抗原: A synthetic phosphopeptide corresponding to residues surrounding Ser166 of human MDM2

经过测试的应用: WB,IHC-P

推荐稀释比: WB: 1/500-1/1000 IHC: 1/50-1/100

种属反应性: Rabbit

克隆性: Rabbit Monoclonal

克隆编号: R08-8C7

分子量: Calculated MW: 55 kDa; Observed MW: 90 kDa

亚型: IgG

纯化: Affinity Purified

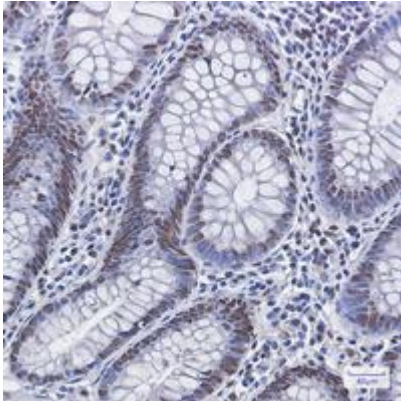
种属反应性: Human,Rat

Modification: Phosphorylated

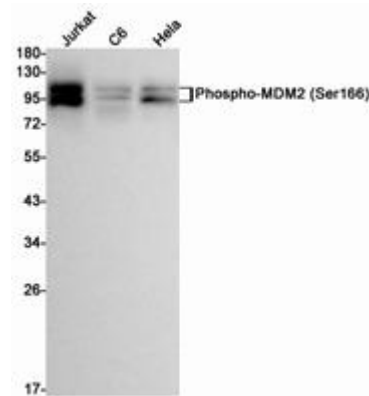
成分: PBS (without Mg²⁺ and Ca²⁺), pH 7.3 containing 50% glycerol, 0.5% BSA and 0.02% sodium azide

研究领域: Neuroscience

储存和运输: Store at -20°C. Avoid repeated freezing and thawing



Immunohistochemistry analysis of paraffin-embedded Human colon cancer using Phospho-MDM2 (Ser166) antibody. High-pressure and temperature Sodium Citrate pH 6.0 was used for antigen retrieval.



Western blot analysis of Phospho-MDM2 (Ser166) in Jurkat, C6, HeLa lysates using Phospho-MDM2 (Ser166) antibody.