

PHOSPHO-LEPTIN RECEPTOR (TYR1141) RABBIT PAB

货号: N225334

产品全名: Phospho-Leptin Receptor (Tyr1141) 兔多抗

基因符号 Leptin receptor; LEP-R; HuB219 OB receptor; OB-R; CD295; LEPR; DB; OBR

UNIPROT ID: P48357

背景: On ligand binding, mediates LEP central and peripheral effects through the activation of different signaling pathways such as JAK2/STAT3 and MAPK cascade/FOS. In the hypothalamus, LEP acts as an appetite-regulating factor that induces a decrease in food intake and an increase in energy consumption by inducing anorexigenic factors and suppressing orexigenic neuropeptides, also regulates bone mass and secretion of hypothalamo-pituitary-adrenal hormones (By similarity).

抗原: Synthetic peptide of human LEPR

经过测试的应用: WB,ELISA

推荐稀释比: WB: 1/500-1/1000 ELISA: 1/10000

种属反应性: Rabbit

克隆性: Rabbit Polyclonal

分子量: Calculated MW: 132 kDa; Observed MW: 132 kDa

亚型: IgG

纯化: Affinity Purified

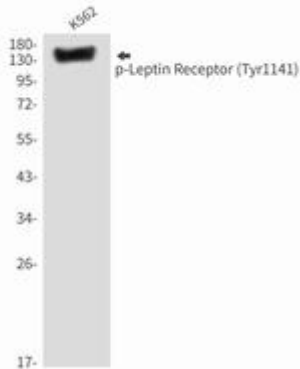
种属反应性: Human,Mouse

Modification: Phosphorylated

成分: PBS (without Mg²⁺ and Ca²⁺), pH 7.3 containing 50% glycerol, 0.5% BSA and 0.02% sodium azide

研究领域: Signal Transduction

储存和运输: Store at -20°C. Avoid repeated freezing and thawing



Western blot analysis of Phospho-Leptin Receptor (Tyr1141) in K562 lysates using Phospho-Leptin Receptor (Tyr1141) antibody.