

## PHOSPHO-ITK (TYR512) RABBIT PAB

货号: N225331

产品全名: Phospho-ITK (Tyr512) 兔多抗

基因符号 ITK; EMT; LYK; Tyrosine-protein kinase ITK/TSK; Interleukin-2-inducible T-cell kinase; IL-2-inducible T-cell kinase; Kinase EMT; T-cell-specific kinase; Tyrosine-protein kinase Lyk

**UNIPROT ID:** Q08881

**背景:** Interleukin-2 inducible T-cell kinase (Itk, Emt or Tsk) is a member of the non-receptor protein tyrosine kinases. Family members of Itk include Tec, Btk, Rlk and Bmx and are all defined by a common structure: an amino-terminal PH domain, a Tec-homology domain and a SH3 and SH2 domain followed by a carboxy-terminal kinase domain. Tec, Rlk and Itk are expressed in T cells and activated in response to T cell receptor (TCR) engagement.

**抗原:** Synthetic peptide of human ITK

**经过测试的应用:** WB,IHC-P,ELISA

**推荐稀释比:** WB: 1/500-1/1000 IHC: 1/50-1/100 ELISA: 1/10000

**种属反应性:** Rabbit

**克隆性:** Rabbit Polyclonal

**分子量:** Calculated MW: 72 kDa; Observed MW: 72 kDa

**亚型:** IgG

**纯化:** Affinity Purified

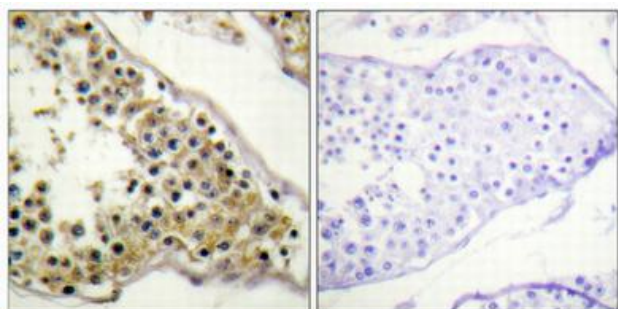
**种属反应性:** Human,Mouse

**Modification:** Phosphorylated

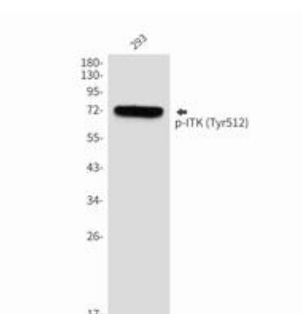
**成分:** PBS (without Mg<sup>2+</sup> and Ca<sup>2+</sup>), pH 7.3 containing 50% glycerol, 0.5% BSA and 0.02% sodium azide

**研究领域:** Signal Transduction

**储存和运输:** Store at -20°C. Avoid repeated freezing and thawing



Immunohistochemistry analysis of paraffin-embedded Human testis using Phospho-ITK (Tyr512) antibody. High-pressure and temperature Sodium Citrate pH 6.0 was used for antigen retrieval. Sample with blocking peptide on the right.



Western blot analysis of Phospho-ITK (Tyr512) in 293 lysates using Phospho-ITK (Tyr512) antibody.