

PHOSPHO-IRS1 (SER636) RABBIT PAB

货号: N225022

产品全名: Phospho-IRS1 (Ser636) 兔多抗

基因符号 IRS1; Insulin receptor substrate 1; IRS-1

UNIPROT ID: P35568

背景: May mediate the control of various cellular processes by insulin. When phosphorylated by the insulin receptor binds specifically to various cellular proteins containing SH2 domains such as phosphatidylinositol 3-kinase p85 subunit or GRB2. Activates phosphatidylinositol 3-kinase when bound to the regulatory p85 subunit .

抗原: The antiserum was produced against synthesized peptide derived from human IRS-1 around the phosphorylation site of Ser636. AA range:603-652

经过测试的应用: WB,IHC-F,IHC-P,ICC/IF,ELISA

推荐稀释比: WB: 1/500-1/1000 IHC: 1/50-1/100 IF: 1/50-1/200 ELISA: 1/10000

种属反应性: Rabbit

克隆性: Rabbit Polyclonal

分子量: Calculated MW: 132 kDa; Observed MW: 150 kDa

亚型: IgG

纯化: Affinity Purified

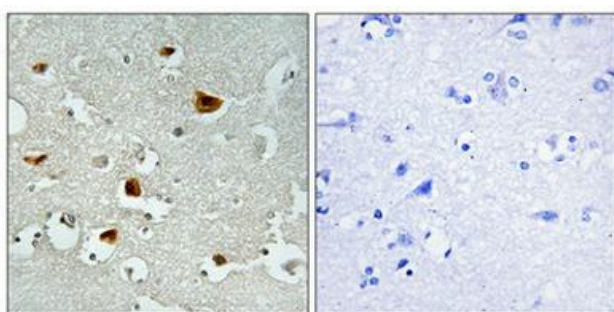
种属反应性: Human, Mouse and Rat

Modification: Phosphorylated

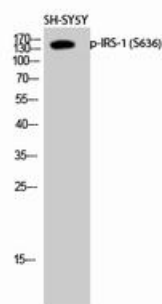
成分: PBS (without Mg²⁺ and Ca²⁺), pH 7.3 containing 50% glycerol, 0.5% BSA and 0.02% sodium azide

研究领域: Tags & Cell Markers

储存和运输: Store at -20°C. Avoid repeated freezing and thawing



Immunohistochemistry analysis of paraffin-embedded Human brain using Phospho-IRS1 (Ser636) antibody. High-pressure and temperature Tris-EDTA pH 8.0 was used for antigen retrieval. Sample with blocking peptide on the right.



Western blot analysis of Phospho-IRS1 (Ser636) in SH-SY5Y lysates using Phospho-IRS1 (S636) antibody.