

## PHOSPHO-IRE1 (SER724) RABBIT MAB

货号: N263172

产品全名: Phospho-IRE1 (Ser724) 兔单克隆抗体

基因符号 ERN1; IRE1; Serine/threonine-protein kinase/endoribonuclease IRE1; Endoplasmic reticulum-to-nucleus signaling 1; Inositol-requiring protein 1; hIRE1p; Ire1-alpha; IRE1a

**UNIPROT ID:** O75460

背景: Senses unfolded proteins in the lumen of the endoplasmic reticulum via its N-terminal domain which leads to enzyme auto-activation. The active endoribonuclease domain splices XBP1 mRNA to generate a new C-terminus, converting it into a potent unfolded-protein response transcriptional activator and triggering growth arrest and apoptosis.

抗原: A synthetic phosphopeptide corresponding to residues surrounding Ser724 of human IRE1

经过测试的应用: WB,IP

推荐稀释比: WB: 1/500-1/1000 IP: 1/20

种属反应性: Rabbit

克隆性: Rabbit Monoclonal

克隆编号: R05-6E7

分子量: Calculated MW: 110 kDa; Observed MW: 110 kDa

亚型: IgG

纯化: Affinity Purified

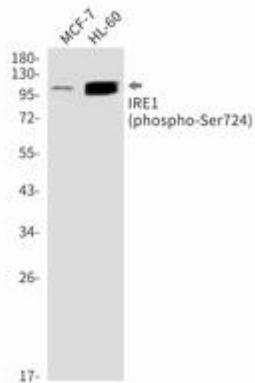
种属反应性: Human

**Modification:** Phosphorylated

成分: PBS (without Mg<sup>2+</sup> and Ca<sup>2+</sup>), pH 7.3 containing 50% glycerol, 0.5% BSA and 0.02% sodium azide

研究领域: Signal Transduction

储存和运输: Store at -20°C. Avoid repeated freezing and thawing



Western blot analysis of Phospho-IRE1 (Ser724) in MCF-7, HL-60 lysates using Phospho-IRE1 (Ser724) antibody.