

## PHOSPHO-IKK BETA (TYR188) RABBIT PAB

货号: N225486

产品全名: Phospho-IKK beta (Tyr188) 兔多抗

基因符号 IKKB; IKK; Inhibitor of nuclear factor kappa-B kinase subunit beta; I-kappa-B-kinase beta; IKK-B; IKK-beta; IkbKB; I-kappa-B kinase 2; IKK2; Nuclear factor NF-kappa-B inhibitor kinase beta; NFKBIKB

**UNIPROT ID:** O14920

**背景:** The NF- $\kappa$ B/Rel transcription factors are present in the cytosol in an inactive state, complexed with the inhibitory I $\kappa$ B proteins (1-3). Most agents that activate NF- $\kappa$ B do so through a common pathway based on phosphorylation-induced, proteasome-mediated degradation of I $\kappa$ B (3-7). The key regulatory step in this pathway involves activation of a high molecular weight I $\kappa$ B kinase (IKK) complex whose catalysis is generally carried out by three tightly associated IKK subunits.

**抗原:** The antiserum was produced against synthesized peptide derived from human IKK-beta around the phosphorylation site of Tyr188. AA range:161-210

**经过测试的应用:** WB,IHC-P,ELISA

**推荐稀释比:** WB: 1/500-1/1000 IHC: 1/50-1/100 ELISA: 1/10000

**种属反应性:** Rabbit

**克隆性:** Rabbit Polyclonal

**分子量:** Calculated MW: 87 kDa; Observed MW: 87 kDa

**亚型:** IgG

**纯化:** Affinity Chromatography

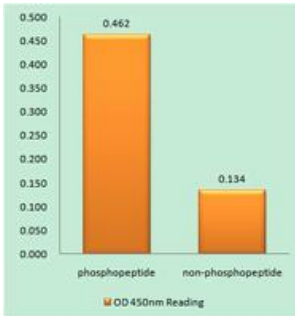
**种属反应性:** Human, Mouse and Rat,Monkey

**Modification:** Phosphorylated

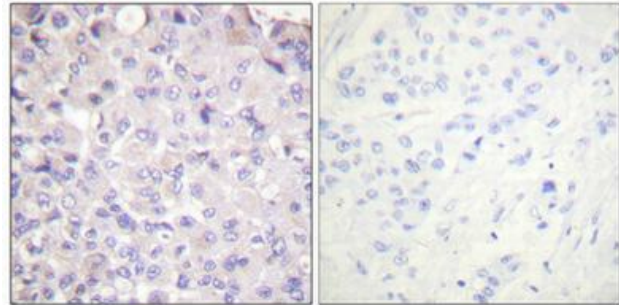
**成分:** PBS (without Mg<sup>2+</sup> and Ca<sup>2+</sup>), pH 7.3 containing 50% glycerol, 0.5% BSA and 0.02% sodium azide

**研究领域:** Signal Transduction

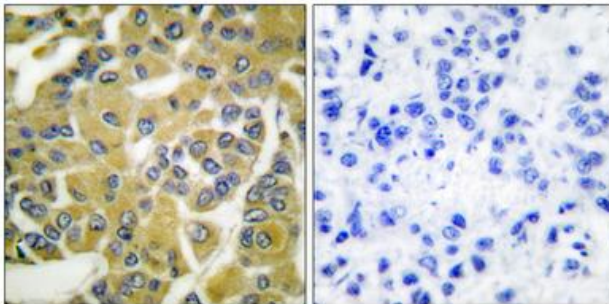
**储存和运输:** Store at -20°C. Avoid repeated freezing and thawing



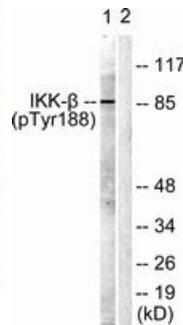
EnzymeLinked Immunosorbent Assay (Phospho-ELISA) for Immunogen Phosphopeptide (Phospho-left) and NonPhosphopeptide (Phospho-right), using IKKbeta (Phospho-Tyr18antibody



Immunohistochemistry analysis of paraffin-embedded Human breast cancer using Phospho-IKK beta (Tyr188) antibody. High-pressure and temperature Tris-EDTA pH 8.0 was used for antigen retrieval. Sample with blocking peptide on the right.



Immunohistochemistry analysis of paraffin-embedded Human breast carcinoma using Phospho-IKK beta (Tyr188) antibody. High-pressure and temperature Sodium Citrate pH 6.0 was used for antigen retrieval. Sample with blocking peptide on the right.



Western blot analysis of Phospho-IKK beta (Tyr188) in COS7 lysates using Phospho-IKK beta (Tyr188) antibody. The lane on the right is blocked with the synthesized peptide.