

PHOSPHO-IKK ALPHA (THR23) RABBIT PAB

货号: N225296

产品全名: Phospho-IKK alpha (Thr23) 兔多抗

基因符号 CHUK; IKKA; TCF16; Inhibitor of nuclear factor kappa-B kinase subunit alpha; I-kappa-B kinase alpha; IKK-A; IKK-alpha; IkbKA; IkappaB kinase; Conserved helix-loop-helix ubiquitous kinase; I-kappa-B kinase 1; IKK1; Nuclear factor NF-kappa-B

UNIPROT ID: O15111

背景: Plays an essential role in the NF-kappa-B signaling pathway which is activated by multiple stimuli such as inflammatory cytokines, bacterial or viral products, DNA damages or other cellular stresses. Activation of IKK depends upon phosphorylation at Ser177 and Ser181 in the activation loop of IKK β (Ser176 and Ser180 in IKK α), which causes conformational changes, resulting in kinase activation.

抗原: Synthetic peptide of human CHUK

经过测试的应用: WB, IHC-P

推荐稀释比: WB: 1/500-1/1000 IHC: 1/50-1/100

种属反应性: Rabbit

克隆性: Rabbit Polyclonal

分子量: Calculated MW: 85 kDa; Observed MW: 85 kDa

亚型: IgG

纯化: Affinity Purified

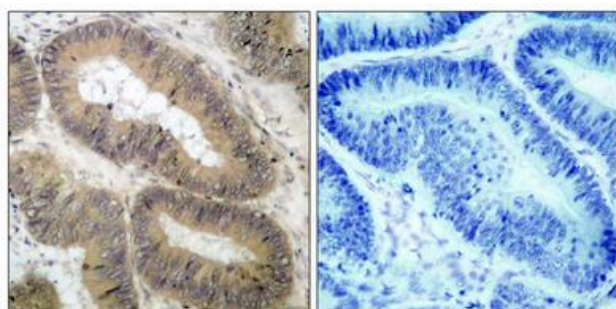
种属反应性: Human, Mouse and Rat

Modification: Phosphorylated

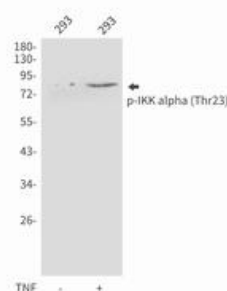
成分: PBS (without Mg²⁺ and Ca²⁺), pH 7.3 containing 50% glycerol, 0.5% BSA and 0.02% sodium azide

研究领域: Signal Transduction

储存和运输: Store at -20°C. Avoid repeated freezing and thawing



Immunohistochemistry analysis of paraffin-embedded Human colon carcinoma tissue using IKK α (Phospho-Thr23) antibody. High-pressure and temperature Sodium Citrate pH 6.0 was used for antigen retrieval. Sample with blocking peptide on the right.



Western blot analysis of Phospho-IKK alpha (Thr23) in 293 lysates using Phospho-IKK alpha (Thr23) antibody.