

PHOSPHO-IKB ALPHA (SER32/SER36) RABBIT PAB

货号: N225382

产品全名: Phospho-IKB alpha (Ser32/Ser36) 兔多抗

基因符号 NFKBIA; IKBA; MAD3; NFKBI; NF-kappa-B inhibitor alpha; I-kappa-B-alpha; Ikb-alpha; IkkappaBalpha; Major histocompatibility complex enhancer-binding protein MAD3

UNIPROT ID: P25963

背景: NFKB1 (MIM 164011) or NFKB2 (MIM 164012) is bound to REL (MIM 164910), RELA (MIM 164014), or RELB (MIM 604758) to form the NFKB complex. The NFKB complex is inhibited by I-kappa-B proteins (NFKBIA or NFKBIB, MIM 604495), which inactivate NF-kappa-B by trapping it in the cytoplasm.

抗原: The antiserum was produced against synthesized peptide derived from human IkkappaB-alpha around the phosphorylation site of Ser32/Ser36. AA range:15-64

经过测试的应用: WB,IHC-F,IHC-P,ICC/IF,ELISA

推荐稀释比: WB: 1/500-1/1000 IHC: 1/50-1/100 IF: 1/50-1/200 ELISA: 1/10000

种属反应性: Rabbit

克隆性: Rabbit Polyclonal

分子量: Calculated MW: 36 kDa; Observed MW: 36 kDa

亚型: IgG

纯化: Affinity Purified

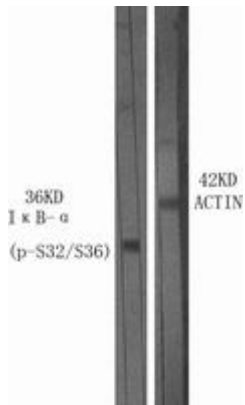
种属反应性: Human, Mouse and Rat,Monkey

Modification: Phosphorylated

成分: PBS (without Mg²⁺ and Ca²⁺), pH 7.3 containing 50% glycerol, 0.5% BSA and 0.02% sodium azide

研究领域: Epigenetics and Nuclear Signaling

储存和运输: Store at -20°C. Avoid repeated freezing and thawing



Western blot analysis of Phospho-IKB alpha (Ser32/Ser36) in various lysates using Phospho-IKB alpha (Ser32/Ser36) antibody.