

PHOSPHO-HSF1 (SER326) RABBIT MAB

货号: N262365

产品全名: Phospho-HSF1 (Ser326) 兔单克隆抗体

基因符号 HSF1; HSTF1; Heat shock factor protein 1; HSF 1; Heat shock transcription factor 1; HSTF 1

UNIPROT ID: Q00613

背景: DNA-binding protein that specifically binds heat shock promoter elements (HSE) and activates transcription. In higher eukaryotes, HSF is unable to bind to the HSE unless the cells are heat shocked.

抗原: A synthetic phosphopeptide corresponding to residues surrounding Ser326 of human HSF1

经过测试的应用: WB,IHC-F,IHC-P,ICC/IF,IP

推荐稀释比: WB: 1/500-1/1000 IHC: 1/50-1/100 IF: 1/50-1/200 IP: 1/20

种属反应性: Rabbit

克隆性: Rabbit Monoclonal

克隆编号: R08-411

分子量: Calculated MW: 57 kDa; Observed MW: 82 kDa

亚型: IgG

纯化: Affinity Purified

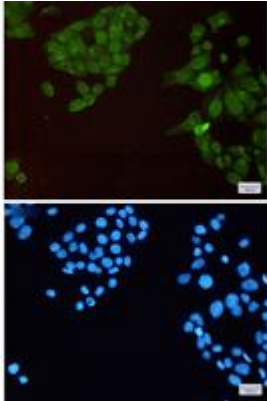
种属反应性: Human

Modification: Phosphorylated

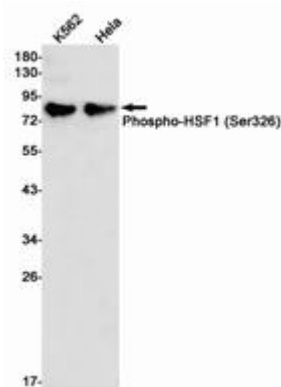
成分: PBS (without Mg²⁺ and Ca²⁺), pH 7.3 containing 50% glycerol, 0.5% BSA and 0.02% sodium azide

研究领域: Tags & Cell Markers

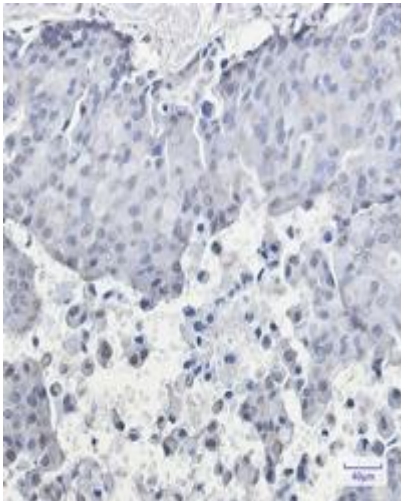
储存和运输: Store at -20°C. Avoid repeated freezing and thawing



Immunocytochemistry analysis of HSF1 (Phospho-Ser326) (green) in HeLa using HSF1 (Phospho-Ser326) antibody, and DAPI (blue)



Western blot analysis of Phospho-HSF1 (Ser326) in K562, HeLa lysates using Phospho-HSF1 (Ser326) antibody.



Immunohistochemistry analysis of paraffin-embedded Human breast cancer using HSF1 (Phospho-Ser326) antibody. High-pressure and temperature Sodium Citrate pH 6.0 was used for antigen retrieval.