

## PHOSPHO-GSK3 (TYR279/TYR216) RABBIT PAB

货号: N225306

产品全名: Phospho-GSK3 (Tyr279/Tyr216) 兔多抗

基因符号 Serine/threonine-protein kinase GSK3A

**UNIPROT ID:** P49840

背景: GSK3A a proline-directed protein kinase of the GSK family. Implicated in the control of several regulatory proteins including glycogen synthase, Myb, and c-Jun. GSK3 and GSK3 have similar functions. GSK3 phosphorylates tau, the principal component of neurofibrillary tangles in Alzheimer disease and is required for maximal production of amyloid plaque peptides by secretase.

抗原: Synthetic peptide of human GSK3A

经过测试的应用: WB,IHC-P,ICC/IF

推荐稀释比: WB: 1/500-1/1000 IHC: 1/50-1/100 ICC: 1/100-1/200

种属反应性: Rabbit

克隆性: Rabbit Polyclonal

分子量: Calculated MW: 51 kDa; Observed MW: 46,51 kDa

亚型: IgG

纯化: Affinity Purified

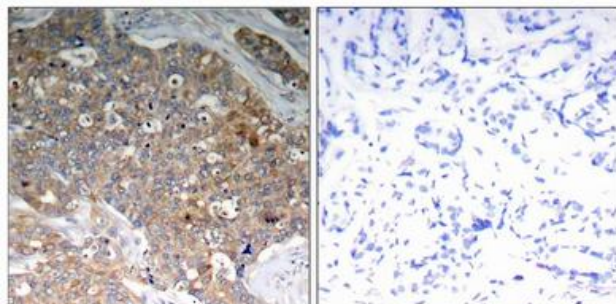
种属反应性: Human, Mouse and Rat

**Modification:** Phosphorylated

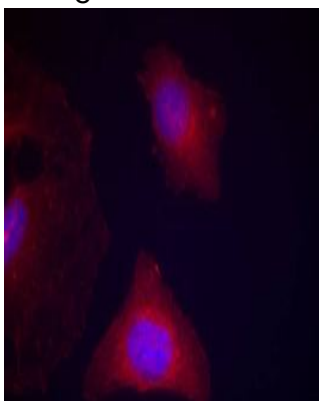
成分: PBS (without Mg<sup>2+</sup> and Ca<sup>2+</sup>), pH 7.3 containing 50% glycerol, 0.5% BSA and 0.02% sodium azide

研究领域: Neuroscience

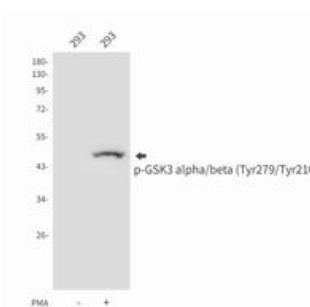
储存和运输: Store at -20°C. Avoid repeated freezing and thawing



Immunohistochemistry analysis of paraffin-embedded Human breast carcinoma tissue using Phospho-GSK3 (Tyr279/Tyr216) antibody. High-pressure and temperature Sodium Citrate pH 6.0 was used for antigen retrieval. Sample with blocking peptide on the right.



Immunofluorescence analysis of Phospho-GSK3 (Tyr279/Tyr216) in HeLa cells using GSK3a/b(Phospho-Tyr279/216) antibody (red).



Western blot analysis of Phospho-GSK3 (Tyr279/Tyr216) in 293 lysates using Phospho-GSK3 alpha/beta (Tyr279/Tyr216) antibody.