

PHOSPHO-GSK3 BETA (SER9) RABBIT MAB

货号: N261729

产品全名: Phospho-GSK3 beta (Ser9) 兔单克隆抗体

基因符号 GSK3B; Glycogen synthase kinase-3 beta; GSK-3 beta;
Serine/threonine-protein kinase GSK3B

UNIPROT ID: P49841

背景: Glycogen synthase kinase-3 (GSK3) is a proline-directed serine-threonine kinase that was initially identified as a phosphorylating and inactivating glycogen synthase. GSK3B is involved in energy metabolism, neuronal cell development, and body pattern formation. In skeletal muscle, it contributes to insulin regulation of glycogen synthesis by phosphorylating and inhibiting GYS1 activity and hence glycogen synthesis.

抗原: A synthetic phosphopeptide corresponding to residues surrounding Ser9 of human GSK3 beta

经过测试的应用: WB, IHC-F, IHC-P, ICC/IF

推荐稀释比: WB: 1/500-1/1000 IHC: 1/50-1/100 IF: 1/50-1/200

种属反应性: Rabbit

克隆性: Rabbit Monoclonal

克隆编号: R06-6H5

分子量: Calculated MW: 47 kDa; Observed MW: 47 kDa

亚型: IgG

纯化: Affinity Purified

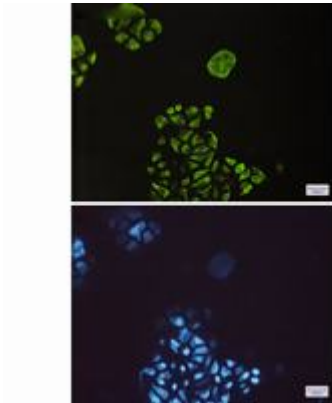
种属反应性: Human, Mouse and Rat

Modification: Phosphorylated

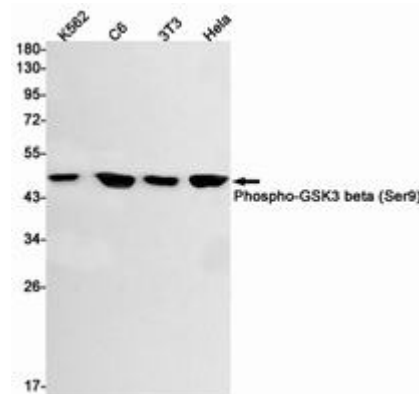
成分: PBS (without Mg²⁺ and Ca²⁺), pH 7.3 containing 50% glycerol, 0.5% BSA and 0.02% sodium azide

研究领域: Neuroscience & Alzheimer's disease

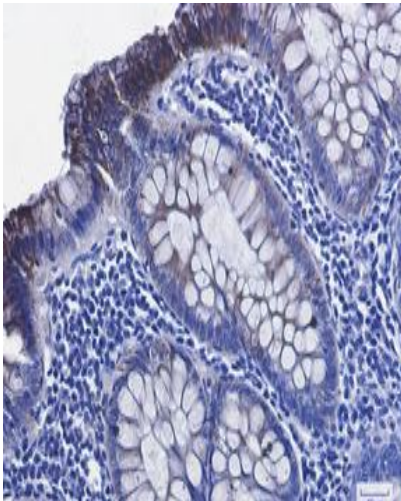
储存和运输: Store at -20°C. Avoid repeated freezing and thawing



Immunocytochemistry analysis of Phospho-GSK3 beta (Ser9) (green) in HeLa using Phospho-GSK3 beta (Ser9) antibody, and DAPI (blue)



Western blot analysis of Phospho-GSK3 beta (Ser9) in K562, C6, 3T3, HeLa lysates using Phospho-GSK3 beta (Ser9) antibody.



Immunohistochemistry analysis of paraffin-embedded Human colon cancer using Phospho-GSK3 beta (Ser9) antibody. High-pressure and temperature Sodium Citrate pH 6.0 was used for antigen retrieval.