

## PHOSPHO-FRS2 (TYR436) RABBIT PAB

货号: N225309

产品全名: Phospho-FRS2 (Tyr436) 兔多抗

基因符号 Fibroblast growth factor receptor substrate 2; FGFR substrate 2; FGFR-signaling adaptor SNT; Src1-associated neurotrophic factor target 1; SNT-1

**UNIPROT ID:** Q8WU20

背景: Adapter protein that links FGR and NGF receptors to downstream signaling pathways. Involved in the activation of MAP kinases. Modulates signaling via SHC1 by competing for a common binding site on NTRK1.

抗原: Synthetic peptide of human FRS2

经过测试的应用: WB,IHC-P

推荐稀释比: WB: 1/500-1/1000 IHC: 1/50-1/100

种属反应性: Rabbit

克隆性: Rabbit Polyclonal

分子量: Calculated MW: 57 kDa; Observed MW: 65 kDa

亚型: IgG

纯化: Affinity Purified

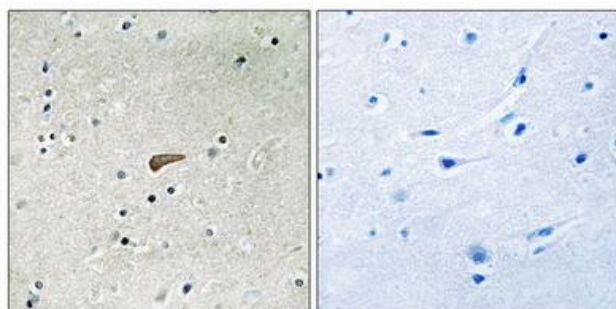
种属反应性: Human

**Modification:** Phosphorylated

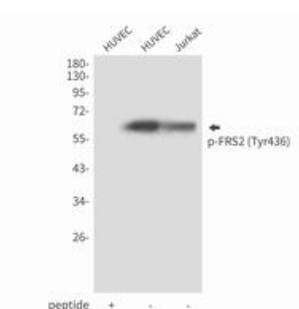
成分: PBS (without Mg<sup>2+</sup> and Ca<sup>2+</sup>), pH 7.3 containing 50% glycerol, 0.5% BSA and 0.02% sodium azide

研究领域: Signal Transduction

储存和运输: Store at -20°C. Avoid repeated freezing and thawing



Immunohistochemistry analysis of paraffin-embedded Human brain tissue using FRS2 (Phospho-Tyr436) antibody. High-pressure and temperature Sodium Citrate pH 6.0 was used for antigen retrieval. Sample with blocking peptide on the right.



Western blot analysis of Phospho-FRS2 (Tyr436) in HUVEC lysates using Phospho-FRS2 (Tyr436) antibody.