

PHOSPHO-ESTROGEN RECEPTOR ALPHA (SER118) RABBIT PAB

货号: N225290

产品全名: Phospho-Estrogen Receptor alpha (Ser118) 兔多抗

基因符号 ESRI; Era; Eralpha; Estrogen receptor; Estradiol receptor; ER-alpha; Estrogen receptor 1; NR3A1; ER; ESR; ESRA; Estrogen receptor alpha

UNIPROT ID: P03372

背景: ER (estrogen receptor 1) a member of the steroid receptor superfamily, contains highly conserved DNA binding (DBD) and ligand binding domains (LBD). Through its estrogen-independent and estrogen-dependent activation domains (AF-1 and AF-2, respectively), ER regulates transcription by recruiting coactivator proteins and interacting with general transcriptional machinery. Phosphorylation provides an important mechanism to regulate ER activity. ER is phosphorylated on multiple sites.

抗原: Synthetic peptide of human ESRI

经过测试的应用: WB,IHC-P,ICC/IF

推荐稀释比: WB: 1/500-1/1000 IHC: 1/50-1/100 ICC: 1/100-1/200

种属反应性: Rabbit

克隆性: Rabbit Polyclonal

分子量: Calculated MW: 66 kDa; Observed MW: 66 kDa

亚型: IgG

纯化: Affinity Purified

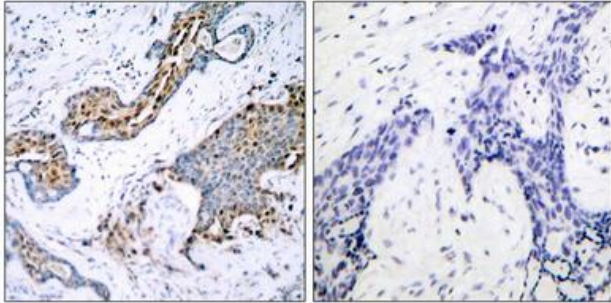
种属反应性: Human

Modification: Phosphorylated

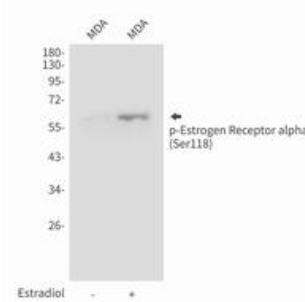
成分: PBS (without Mg²⁺ and Ca²⁺), pH 7.3 containing 50% glycerol, 0.5% BSA and 0.02% sodium azide

研究领域: Signal Transduction

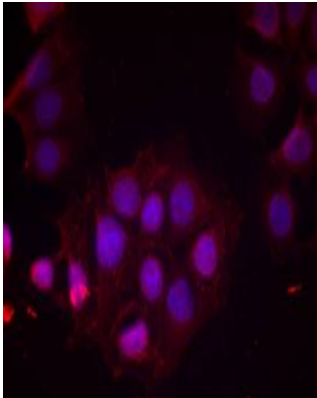
储存和运输: Store at -20°C. Avoid repeated freezing and thawing



Immunohistochemistry analysis of paraffin-embedded Human breast carcinoma tissue using Estrogen Receptor alpha (Phospho-Ser118) antibody. High-pressure and temperature Sodium Citrate pH 6.0 was used for antigen retrieval. Sample with blocking peptide on the right.



Western blot analysis of Phospho-Estrogen Receptor alpha (Ser118) in MDAMB435 lysates using Phospho-Estrogen Receptor alpha (Ser118) antibody.



Immunofluorescence analysis of Phospho-Estrogen Receptor alpha (Ser118) in MCF-7 cells using Estrogen Receptor alpha (Phospho-Ser118) antibody (red).