

## PHOSPHO-EIF4E (SER209) RABBIT MAB

货号: N262169

产品全名: Phospho-eIF4E (Ser209) 兔单克隆抗体

基因符号 EIF4E; EIF4EL1; EIF4F; Eukaryotic translation initiation factor 4E; eIF-4E; eIF4E; eIF-4F 25 kDa subunit; mRNA cap-binding 蛋白

**UNIPROT ID:** P06730

**背景:** eIF4E, a protein modulates translation of maternal mRNAs in early embryos before the onset of zygotic transcription. eIF4E also influences the overall rate of translation. eIF4E binds to the 7 methyl GTP cap structure of eukaryotic mRNAs. Phosphorylation of eIF4E on serine 209 regulates the affinity of this protein for the 7 methyl GTP cap and/or RNA. Phosphorylation also enhances the interaction of eIF4E with eIF4G, which form a complex known as eIF4F. eIF4E phosphorylation is correlated with increased translational rate in a number of cell types.

**抗原:** A synthetic phosphopeptide corresponding to residues surrounding Ser209 of human eIF4E

**经过测试的应用:** WB,IHC-F,IHC-P,ICC/IF,IP

**推荐稀释比:** WB: 1/500-1/1000 IHC: 1/50-1/100 IF: 1/50-1/200 IP: 1/20

**种属反应性:** Rabbit

**克隆性:** Rabbit Monoclonal

**克隆编号:** R04-5A4

**分子量:** Calculated MW: 25 kDa; Observed MW: 25 kDa

**亚型:** IgG

**纯化:** Affinity Purified

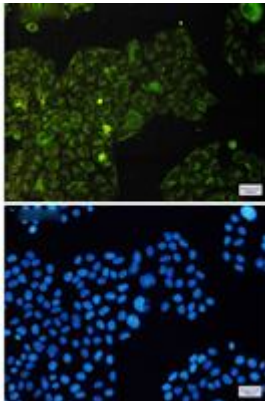
**种属反应性:** Human, Mouse and Rat

**Modification:** Phosphorylated

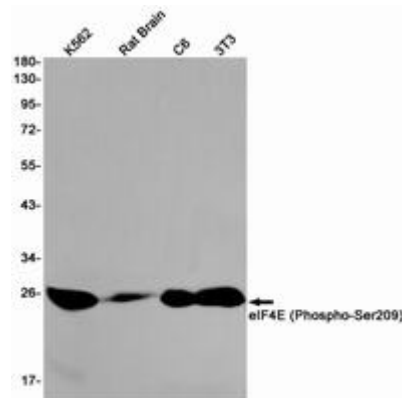
**成分:** PBS (without Mg<sup>2+</sup> and Ca<sup>2+</sup>), pH 7.3 containing 50% glycerol, 0.5% BSA and 0.02% sodium azide

**研究领域:** Hypoxia Signal Transduction& Hypoxia-induced

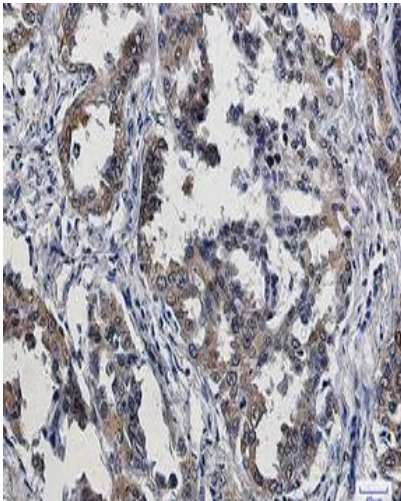
**储存和运输:** Store at -20°C. Avoid repeated freezing and thawing



Immunocytochemistry analysis of eIF4E (Phospho-Ser209) (green) in HeLa using eIF4E (Phospho-Ser209) antibody, and DAPI (blue)



Western blot analysis of eIF4E (Phospho-Ser209) in K562, rat Brain, C6, 3T3 lysates using Phospho-eIF4E (Ser209) antibody.



Immunohistochemistry analysis of paraffin-embedded Human lung cancer using Phospho-eIF4E (Ser209) antibody. High-pressure and temperature Sodium Citrate pH 6.0 was used for antigen retrieval.