

## PHOSPHO-EIF4B (SER406) RABBIT MAB

货号: N263161

产品全名: Phospho-eIF4B (Ser406) 兔单克隆抗体

基因符号 EIF-4B; PRO1843

**UNIPROT ID:** P23588

**背景:** The eukaryotic translation initiation factor 4B (eIF4B) plays a critical role in recruiting the 40S ribosomal subunit to the mRNA. It functions in close association with eIF4F and eIF4A. It binds near the 5'-terminal cap of mRNA in the presence of eIF4F and ATP. It promotes the ATPase activity and the ATP-dependent RNA unwinding activity of both eIF4A and eIF4F

**抗原:** A synthetic phosphopeptide corresponding to residues surrounding Ser406 of human eIF4B

**经过测试的应用:** WB, IHC-P

**推荐稀释比:** WB: 1/500-1/1000 IHC: 1/50-1/100

**种属反应性:** Rabbit

**克隆性:** Rabbit Monoclonal

**克隆编号:** R05-4B2

**分子量:** Calculated MW: 69 kDa; Observed MW: 80 kDa

**亚型:** IgG

**纯化:** Affinity Purified

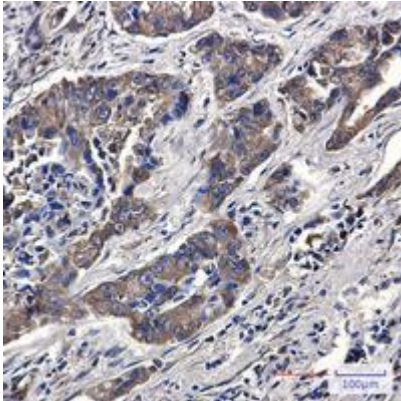
**种属反应性:** Human, Mouse and Rat

**Modification:** Phosphorylated

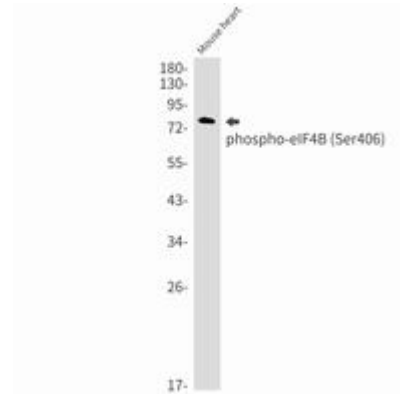
**成分:** PBS (without Mg<sup>2+</sup> and Ca<sup>2+</sup>), pH 7.3 containing 50% glycerol, 0.5% BSA and 0.02% sodium azide

**研究领域:** Epigenetics and Nuclear Signaling

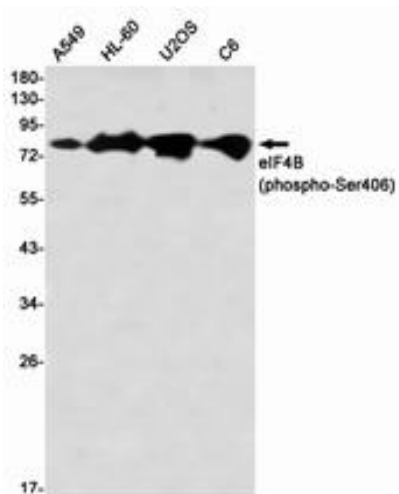
**储存和运输:** Store at -20°C. Avoid repeated freezing and thawing



Immunohistochemistry analysis of paraffin-embedded Human lung cancer using eIF4B (Phospho-Ser406) antibody. High-pressure and temperature Sodium Citrate pH 6.0 was used for antigen retrieval.



Western blot analysis of Phospho-eIF4B (Ser406) in mouse heart lysates using Phospho-eIF4B (Ser406) antibody.



Western blot analysis of eIF4B (Phospho-Ser406) in A549, HL-60, U2OS, C6 lysates using eIF4B (Phospho-Ser406) antibody.