

## PHOSPHO-EGFR (TYR1092) RABBIT MAB

货号: N262156

产品全名: Phospho-EGFR (Tyr1092) 兔单克隆抗体

基因符号 EGFR; ERBB; ERBB1; HER1; Epidermal growth factor receptor; Proto-oncogene c-ErbB-1; Receptor tyrosine-protein kinase erbB-1

**UNIPROT ID:** P00533

**背景:** EGFR is a receptor tyrosine kinase. Receptor for epidermal growth factor (EGF) and related growth factors including TGF- $\alpha$ , amphiregulin, betacellulin, heparin-binding EGF-like growth factor, GP30 and vaccinia virus growth factor. Is involved in the control of cell growth and differentiation. . A single-pass transmembrane tyrosine kinase. Ligand binding to this receptor results in receptor dimerization, autophosphorylation (in trans), activation of various downstream signaling molecules and lysosomal degradation.

**抗原:** A synthetic phosphopeptide corresponding to residues surrounding Tyr1092 of human EGFR

**经过测试的应用:** WB,IHC-P

**推荐稀释比:** WB: 1/500-1/1000 IHC: 1/50-1/100

**种属反应性:** Rabbit

**克隆性:** Rabbit Monoclonal

**克隆编号:** R05-2A2

**分子量:** Calculated MW: 134 kDa; Observed MW: 175 kDa

**亚型:** IgG

**纯化:** Affinity Purified

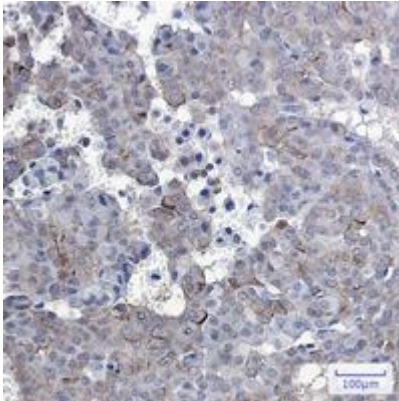
**种属反应性:** Human, Mouse and Rat

**Modification:** Phosphorylated

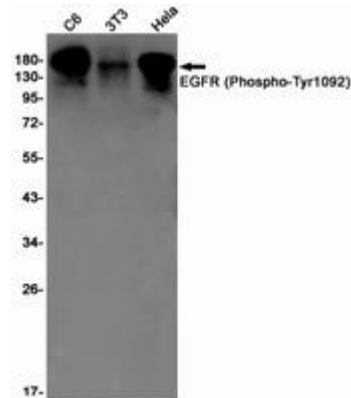
**成分:** PBS (without Mg<sup>2+</sup> and Ca<sup>2+</sup>), pH 7.3 containing 50% glycerol, 0.5% BSA and 0.02% sodium azide

**研究领域:** Signal Transduction

**储存和运输:** Store at -20°C. Avoid repeated freezing and thawing



Immunohistochemistry analysis of paraffin-embedded Human breast cancer using Phospho-EGFR (Tyr1092) antibody. High-pressure and temperature Sodium Citrate pH 6.0 was used for antigen retrieval.



Western blot analysis of EGFR (Phospho-Tyr1092) in C6, 3T3, HeLa lysates using Phospho-EGFR (Tyr1092) antibody.