

PHOSPHO-EGFR (TYR1068) RABBIT MAB

货号: N262155

产品全名: Phospho-EGFR (Tyr1068) 兔单克隆抗体

基因符号 EGFR; ERBB; ERBB1; HER1; Epidermal growth factor receptor; Proto-oncogene c-ErbB-1; Receptor tyrosine-protein kinase erbB-1

UNIPROT ID: P00533

背景: EGFR is a receptor tyrosine kinase. Receptor for epidermal growth factor (EGF) and related growth factors including TGF- α , amphiregulin, betacellulin, heparin-binding EGF-like growth factor, GP30 and vaccinia virus growth factor. Is involved in the control of cell growth and differentiation. . A single-pass transmembrane tyrosine kinase. Ligand binding to this receptor results in receptor dimerization, autophosphorylation (in trans), activation of various downstream signaling molecules and lysosomal degradation.

抗原: A synthetic phosphopeptide corresponding to residues surrounding Tyr1068 of human EGFR

经过测试的应用: WB,IHC-F,IHC-P,ICC/IF

推荐稀释比: WB: 1/500-1/1000 IHC: 1/50-1/100 IF: 1/50-1/200

种属反应性: Rabbit

克隆性: Rabbit Monoclonal

克隆编号: R03-9F5

分子量: Calculated MW: 134 kDa; Observed MW: 175 kDa

亚型: IgG

纯化: Affinity Purified

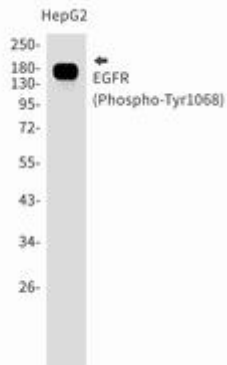
种属反应性: Human

Modification: Phosphorylated

成分: PBS (without Mg²⁺ and Ca²⁺), pH 7.3 containing 50% glycerol, 0.5% BSA and 0.02% sodium azide

研究领域: Signal Transduction

储存和运输: Store at -20°C. Avoid repeated freezing and thawing



Western blot analysis of EGFR (Phospho-Tyr1068) in HepG2 lysates using Phospho-EGFR (Tyr1068) antibody.