

## PHOSPHO-DELTA 1 CATENIN (TYR228) RABBIT MAB

货号: N261724

产品全名: Phospho-delta 1 Catenin (Tyr228) 兔单克隆抗体

基因符号 CAS; p120; BCDS2; CTNND; P120CAS; P120CTN; p120(CAS); p120(CTN)

**UNIPROT ID:** O60716

**背景:** Catenin  $\delta$ -1 (p120 catenin) has an amino-terminal coiled-coil domain followed by a regulatory domain containing multiple phosphorylation sites and a central Armadillo repeat domain of ten linked 42-amino acid repeats. The carboxy-terminal tail has no known function. Catenin  $\delta$ -1 fulfills critical roles in the regulation of cell-cell adhesion as it regulates E-cadherin turnover at the cell surface to determine the level of E-cadherin available for cell-cell adhesion.

**抗原:** A synthetic phosphopeptide corresponding to residues surrounding Tyr228 of human delta 1 Catenin

**经过测试的应用:** WB, ICC/IF, IP

**推荐稀释比:** WB: 1/500-1/1000 IF: 1/50-1/200 IP: 1/20

**种属反应性:** Rabbit

**克隆性:** Rabbit Monoclonal

**克隆编号:** R08-5A8

**分子量:** Calculated MW: 108 kDa; Observed MW: 95,100 kDa

**亚型:** IgG

**纯化:** Affinity Purified

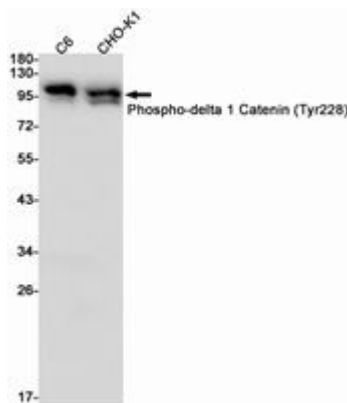
**种属反应性:** Rat, Hamster

**Modification:** Phosphorylated

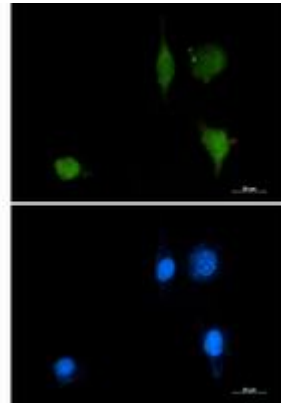
**成分:** PBS (without Mg<sup>2+</sup> and Ca<sup>2+</sup>), pH 7.3 containing 50% glycerol, 0.5% BSA and 0.02% sodium azide

**研究领域:** Cell Biology

**储存和运输:** Store at -20°C. Avoid repeated freezing and thawing



Western blot analysis of Phospho-delta 1 Catenin (Tyr228) in C6, CHO-K1 lysates using Phospho-delta 1 Catenin (Tyr228) antibody.



Immunocytochemistry analysis of Phospho-delta 1 Catenin (Tyr228) (green) in SKOV-3 using Phospho-delta 1 Catenin (Tyr228) antibody, and DAPI (blue).