

## PHOSPHO-CYCLIN B1 (SER126) RABBIT MAB

货号: N263155

产品全名: Phospho-Cyclin B1 (Ser126) 兔单克隆抗体

基因符号 CCNB1; CCNB; G2/mitotic-specific cyclin-B1

**UNIPROT ID:** P14635

**背景:** Essential for the control of the cell cycle at the G2/M (mitosis) transition. a member of the highly conserved cyclin family, whose members are characterized by a dramatic periodicity in protein abundance through the cell cycle. Cyclins function as regulators of CDK kinases.

**抗原:** A synthetic phosphopeptide corresponding to residues surrounding Ser126 of human Cyclin B1

**经过测试的应用:** WB,IP

**推荐稀释比:** WB: 1/500-1/1000 IP: 1/20

**种属反应性:** Rabbit

**克隆性:** Rabbit Monoclonal

**克隆编号:** R05-3B3

**分子量:** Calculated MW: 48 kDa; Observed MW: 55 kDa

**亚型:** IgG

**纯化:** Affinity Purified

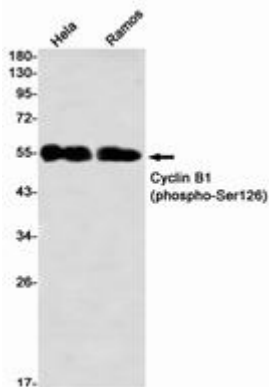
**种属反应性:** Human

**Modification:** Phosphorylated

**成分:** PBS (without Mg<sup>2+</sup> and Ca<sup>2+</sup>), pH 7.3 containing 50% glycerol, 0.5% BSA and 0.02% sodium azide

**研究领域:** Cell Biology

**储存和运输:** Store at -20°C. Avoid repeated freezing and thawing



Western blot analysis of Cyclin B1 (Phospho-Ser126) in HeLa, Ramos lysates using Phospho-Cyclin B1 (Ser126) antibody.



# Product Description

Pioneering GTPase and Oncogene Product Development since 2010

---