

PHOSPHO-CREB (SER133) RABBIT PAB

货号: N225378

产品全名: Phospho-CREB (Ser133) 兔多抗

基因符号 CREB1; Cyclic AMP-responsive element-binding protein 1;
CREB-1; cAMP-responsive element-binding protein 1

UNIPROT ID: P16220

背景: This gene encodes a transcription factor that is a member of the leucine zipper family of DNA binding proteins. This protein binds as a homodimer to the cAMP-responsive element, an octameric palindrome.

抗原: The antiserum was produced against synthesized peptide derived from human CREB around the phosphorylation site of Ser133. AA range:100-149

经过测试的应用: ICC/IF, WB, IHC-F, IHC-P, IP, ELISA

推荐稀释比: WB: 1/500-1/1000 IHC: 1/50-1/100 IF: 1/50-1/200 IP: 1/20 ELISA: 1/10000

种属反应性: Rabbit

克隆性: Rabbit Polyclonal

分子量: Calculated MW: 35 kDa; Observed MW: 35 kDa

亚型: IgG

纯化: Affinity Purified

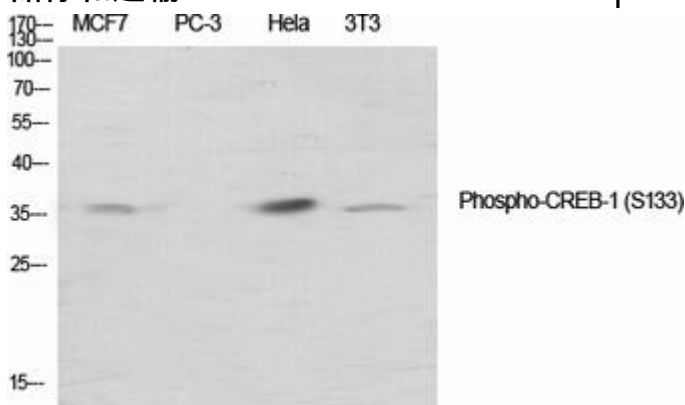
种属反应性: Human, Mouse and Rat

Modification: Phosphorylated

成分: PBS (without Mg²⁺ and Ca²⁺), pH 7.3 containing 50% glycerol, 0.5% BSA and 0.02% sodium azide

研究领域: Epigenetics and Nuclear Signaling

储存和运输: Store at -20°C. Avoid repeated freezing and thawing



Western blot analysis of Phospho-CREB (Ser133) in various lysates using Phospho-CREB (Ser133) antibody.



Product Description

Pioneering GTPase and Oncogene Product Development since 2010
