

PHOSPHO-CREB (SER133) RABBIT PAB

货号: N225557

产品全名: Phospho-CREB (Ser133) 兔多抗

基因符号 CREB1; Cyclic AMP-responsive element-binding protein 1;
CREB-1; cAMP-responsive element-binding protein 1

UNIPROT ID: P16220

背景: This gene encodes a transcription factor that is a member of the leucine zipper family of DNA binding proteins. This protein binds as a homodimer to the cAMP-responsive element, an octameric palindrome.

抗原: A synthesized peptide derived from human Phospho-Creb (S133)

经过测试的应用: WB,IHC-P,ICC/IF,IP,FC

推荐稀释比: WB: 1/500-1/1000 IHC: 1/50-1/100 IF: 1/50-1/200 IP: 1/20 FC:
1/50-1/100

种属反应性: Rabbit

克隆性: Rabbit Polyclonal

分子量: Calculated MW: 35 kDa; Observed MW: 46 kDa

亚型: IgG

纯化: Affinity Chromatography

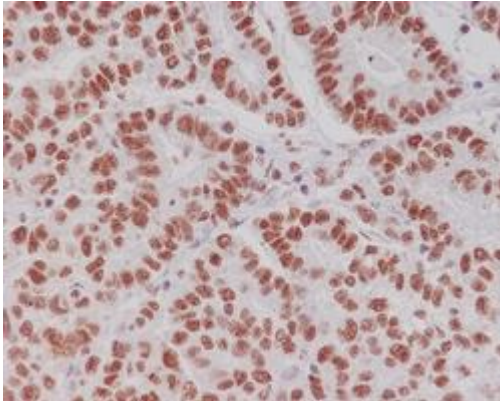
种属反应性: Human, Mouse and Rat

Modification: Phosphorylated

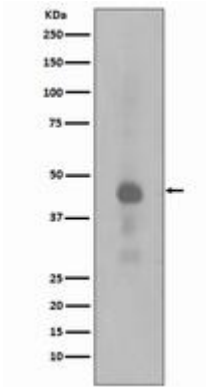
成分: PBS (without Mg²⁺ and Ca²⁺), pH 7.3 containing 50% glycerol,
0.5% BSA and 0.02% sodium azide

研究领域: Epigenetics and Nuclear Signaling

储存和运输: Store at -20°C. Avoid repeated freezing and thawing



Immunohistochemistry analysis of paraffin-embedded Human gastric carcinoma using Phospho-Creb (S133) antibody. High-pressure and temperature Sodium Citrate pH 6.0 was used for antigen retrieval.



Western blot analysis of Phospho-Creb(Ser133) in HeLa lysates treated with Calyculin A using Phospho-CREB (Ser133) antibody.