

## PHOSPHO-CREB (SER133) RABBIT MAB

货号: N262065

产品全名: Phospho-CREB (Ser133) 兔单克隆抗体

基因符号 CREB1; Cyclic AMP-responsive element-binding protein 1;  
CREB-1; cAMP-responsive element-binding protein 1

**UNIPROT ID:** P16220

**背景:** This gene encodes a transcription factor that is a member of the leucine zipper family of DNA binding proteins. This protein binds as a homodimer to the cAMP-responsive element, an octameric palindrome.

**抗原:** A synthetic phosphopeptide corresponding to residues surrounding Ser133 of human CREB

**经过测试的应用:** WB,IHC-P,IP

**推荐稀释比:** WB: 1/500-1/1000 IHC: 1/50-1/100 IP: 1/20

**种属反应性:** Rabbit

**克隆性:** Rabbit Monoclonal

**克隆编号:** R07-3C4

**分子量:** Calculated MW: 35 kDa; Observed MW: 43 kDa

**亚型:** IgG

**纯化:** Affinity Purified

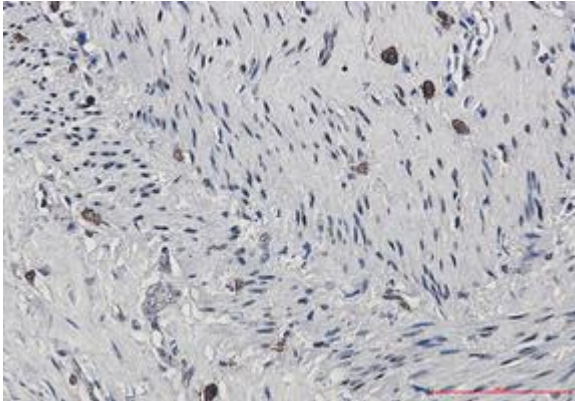
**种属反应性:** Human,Rat

**Modification:** Phosphorylated

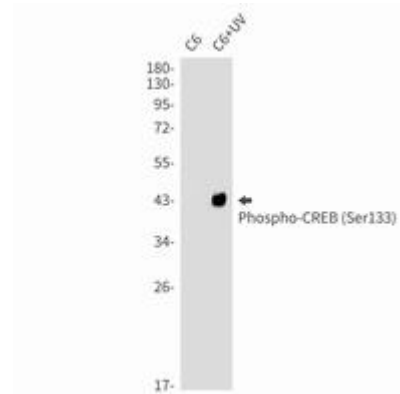
**成分:** PBS (without Mg<sup>2+</sup> and Ca<sup>2+</sup>), pH 7.3 containing 50% glycerol, 0.5% BSA and 0.02% sodium azide

**研究领域:** Epigenetics and Nuclear Signaling

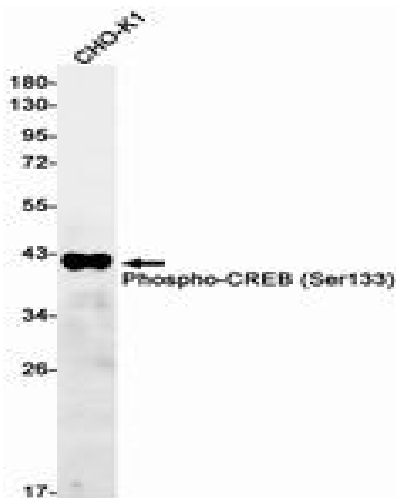
**储存和运输:** Store at -20°C. Avoid repeated freezing and thawing



Immunohistochemistry analysis of paraffin-embedded Human lung cancer using CREB (Phospho-Ser133) antibody. High-pressure and temperature Sodium Citrate pH 6.0 was used for antigen retrieval.



Western blot analysis of Phospho-CREB (Ser133) in C6, C6+UV lysates using Phospho-CREB (Ser133) antibody.



Western blot analysis of Phospho-CREB (Ser133) in CHO-K1 lysates using Phospho-CREB (Ser133) antibody.