

PHOSPHO-CDC37 (SER13) RABBIT PAB

货号: N225739

产品全名: Phospho-CDC37 (Ser13) 兔多抗

基因符号 CDC37; CDC37A; Hsp90 co-chaperone Cdc37; Hsp90 chaperone protein kinase-targeting subunit; p50Cdc37

UNIPROT ID: Q16543

背景: CDC37 is an important component of the HSP90 chaperone complex. It was initially identified for its involvement in cell-cycle progression and was later found to have a much broader role as a chaperone for a wide variety of kinases and other proteins. CDC37 protein has an amino-terminal kinase binding domain followed by a central HSP90 binding domain.

抗原: A synthesized peptide derived from human Phospho-CDC37 (S13)

经过测试的应用: WB,IP

推荐稀释比: WB: 1/500-1/1000 IP: 1/20

种属反应性: Rabbit

克隆性: Rabbit Polyclonal

分子量: Calculated MW: 44 kDa; Observed MW: 50 kDa

亚型: IgG

纯化: Affinity Chromatography

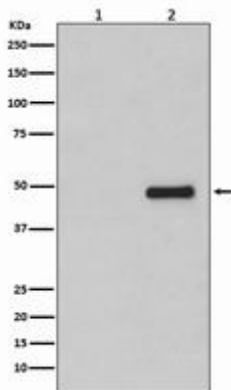
种属反应性: Human, Mouse and Rat

Modification: Phosphorylated

成分: PBS (without Mg²⁺ and Ca²⁺), pH 7.3 containing 50% glycerol, 0.5% BSA and 0.02% sodium azide

研究领域: Cell Biology

储存和运输: Store at -20°C. Avoid repeated freezing and thawing



Western blot analysis of Phospho-CDC37 (S13) in (1) Jurkat lysates treated with Alkaline Phosphatase; (2) Jurkat lysates using Phospho-CDC37 (Ser13) antibody.