

PHOSPHO-CDC37 (SER13) RABBIT MAB

货号: N263152

产品全名: Phospho-CDC37 (Ser13) 兔单克隆抗体

基因符号 CDC37; CDC37A; Hsp90 co-chaperone Cdc37; Hsp90 chaperone protein kinase-targeting subunit; p50Cdc37

UNIPROT ID: Q16543

背景: CDC37 is an important component of the HSP90 chaperone complex. It was initially identified for its involvement in cell-cycle progression and was later found to have a much broader role as a chaperone for a wide variety of kinases and other proteins. CDC37 protein has an amino-terminal kinase binding domain followed by a central HSP90 binding domain.

抗原: A synthetic phosphopeptide corresponding to residues surrounding Ser13 of human Cdc37

经过测试的应用: WB,IP

推荐稀释比: WB: 1/500-1/1000 IP: 1/20

种属反应性: Rabbit

克隆性: Rabbit Monoclonal

克隆编号: R04-418

分子量: Calculated MW: 44 kDa; Observed MW: 44 kDa

亚型: IgG

纯化: Affinity Purified

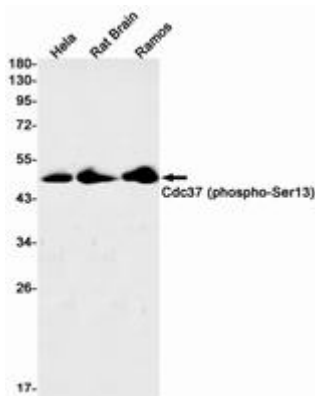
种属反应性: Human, Mouse and Rat

Modification: Phosphorylated

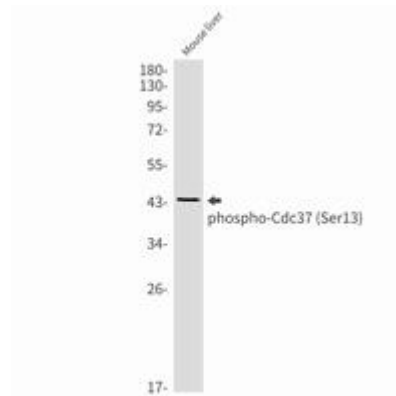
成分: PBS (without Mg²⁺ and Ca²⁺), pH 7.3 containing 50% glycerol, 0.5% BSA and 0.02% sodium azide

研究领域: Cell Biology

储存和运输: Store at -20°C. Avoid repeated freezing and thawing



Western blot analysis of Cdc37 (Phospho-Ser13) in HeLa, rat Brain, Ramos lysates using Cdc37 (Phospho-Ser13) antibody.



Western blot analysis of Phospho-Cdc37 (Ser13) in mouse liver lysates using Phospho-CDC37 (Ser13) antibody.