

PHOSPHO-CDC25C (SER198) RABBIT PAB

货号: N225312

产品全名: Phospho-CDC25C (Ser198) 兔多抗

基因符号 CDC25C; M-phase inducer phosphatase 3; Dual specificity phosphatase Cdc25C

UNIPROT ID: P30307

背景: Functions as a dosage-dependent inducer in mitotic control. It is a tyrosine protein phosphatase required for progression of the cell cycle. It directly dephosphorylates CDK1 and activate its kinase activity.

抗原: Synthetic peptide of human CDC25C

经过测试的应用: IHC-P

推荐稀释比: IHC: 1/50-1/100

种属反应性: Rabbit

克隆性: Rabbit Polyclonal

分子量: -

亚型: IgG

纯化: Affinity Purified

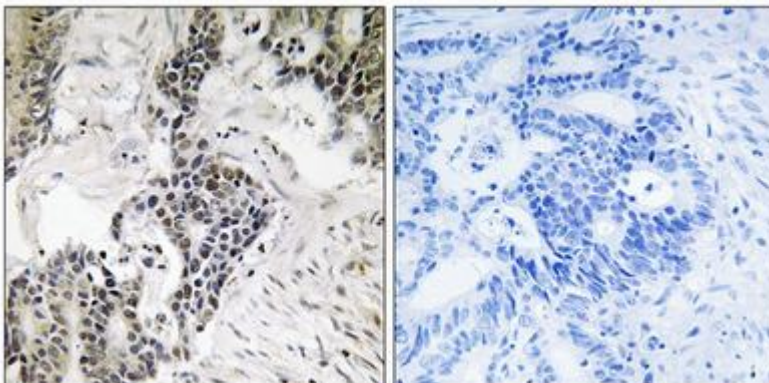
种属反应性: Human

Modification: Phosphorylated

成分: PBS (without Mg²⁺ and Ca²⁺), pH 7.3 containing 50% glycerol, 0.5% BSA and 0.02% sodium azide

研究领域: Cell Biology

储存和运输: Store at -20°C. Avoid repeated freezing and thawing



Immunohistochemistry analysis of paraffin-embedded Human colon carcinoma tissue using Phospho-CDC25C (Ser198) antibody. High-pressure and temperature Sodium Citrate pH 6.0 was used for antigen retrieval. Sample with blocking peptide on the right.



Product Description

Pioneering GTPase and Oncogene Product Development since 2010
